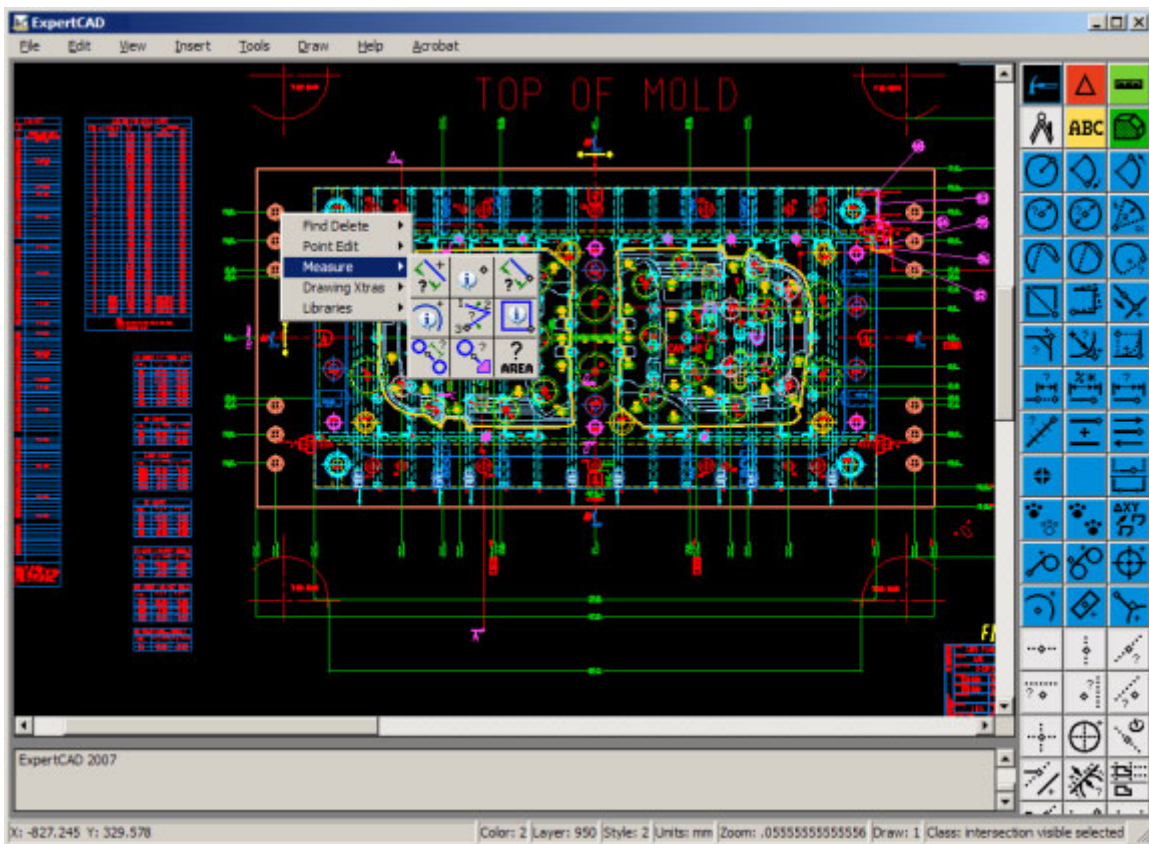


ExpertCAD™ ExpertCAM™

ExpertCAD 2007 Release Summary September 2007

Overview

Welcome to the next generation of ExpertCAD & ExpertCAM for Windows. The applications have been transformed into true Windows applications. As a necessary part of this transformation, the user interface has been dramatically changed to adopt Windows-standard features and appearance while retaining the unique characteristics such as cursor strokes that makes the software so productive.



ExpertCAD 2007 for Windows

This document will serve as your guide to these major changes in the user interface including the new features and functions now possible. Although major changes have been made, you will find it very easy to adapt to this new version because wherever possible, Windows standards and industry conventions have been followed.

Windows User Interface Overview

This section describes the changes to the user interface. The examples shown are for ExpertCAD. ExpertCAM has identical or very similar changes to its user interface as well.

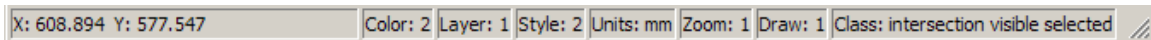
General Window Layout

The same general layout of the window has been retained:

- Windows menus along the top of the window.
- Central graphics area for display of the drawing or NC cutter path.
- Static icons along the right-hand side.
- Pop-up menus.
- A message area at the bottom of the screen for prompts and messages.

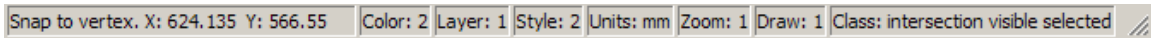
Status Bar

A Windows-style status bar has been added to the bottom of the window:

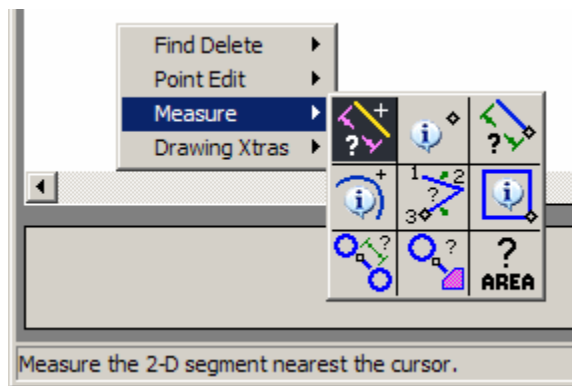


This status bar replaces the old 'headline' in previous versions. Clicking in any of the cells that report the current layer, units, etc. will cause a dialog or prompt to allow you to quickly change their status just as with the former headline.

In the left-most cell of the status bar, the coordinates of the cursor will be shown & updated as you move the cursor around the drawing. Holding down the 'Shift' key while moving the mouse will report precise coordinates of geometry nearby:

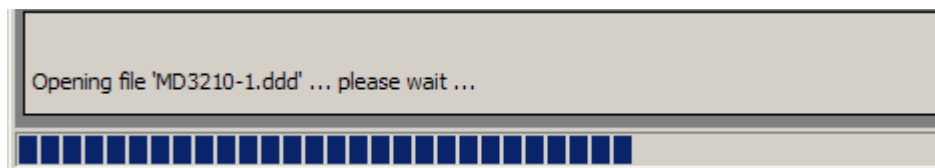


The left-most cell is also used to show a 1-line help string when tracking icons, menus or pop-up menus. Informational messages are also displayed here such as the coordinates of a point dropped or what the last short command just did:

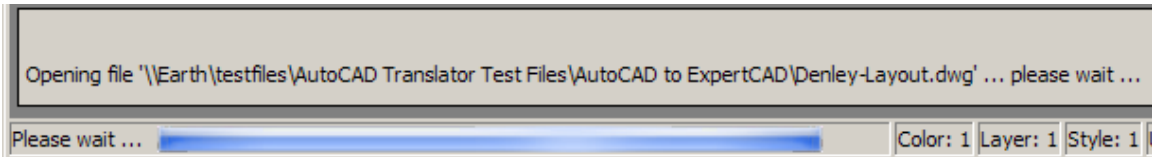


Tracking over any menu item or icon posts a 1-line help message.

A progress meter is shown in the left-most cell for operations that can take more than several seconds to complete. There are 2 styles of progress meters:



The discrete progress meter is used for operations where actual progress towards completion can be measured.



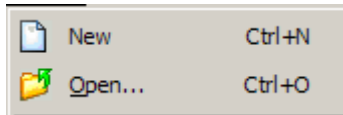
The marquee-style progress meter is shown when a solution is being computed but actual progress towards completion can't be determined.

Keystroke Commands

Where possible, all the standard factory-settings for keystroke commands have been retained. Some important changes to be aware of include:

- The 'Esc' key replaces the Ctrl-C key combination to interrupt an operation. Whenever you wish to interrupt a long-running operation or dismiss a dialog or prompt, hit the 'Esc' key. The Ctrl-C combination is the keystroke for Edit/Copy.
- Because of the change to handling the Esc command, the old key combinations such as Esc-E for 'edit' are no longer supported.
- The 'F1' key defaults to Help/Contents. In previous releases, F1 was the keystroke to enter a long command from the keyboard. To enter long commands, use the ':' (colon) key which by default performed this function in previous releases.

Throughout the user interface, keystroke commands have been implemented to conform to Windows standard. If there are keystroke commands for a feature/function in a pull-down menu, the keystroke is listed in the menu item:



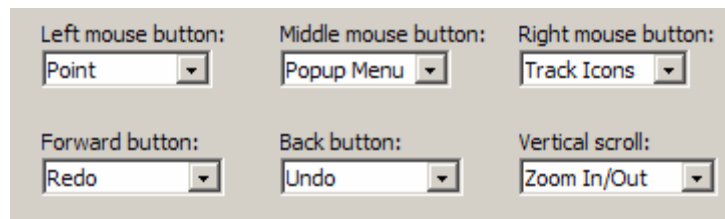
In the File menu, Ctrl+O is the keystroke combination to open a file. Similarly Ctrl+N will start a new drawing. Both are Windows standard keystrokes for these features.

Mouse Button Assignments

The applications default to the traditional mouse-button assignments although these can be changed according to your preferences in the User Preferences tab of the Tools/Options property sheet. By default the button assignments are:

- Left-mouse button – digitize points & cursor strokes.
- Middle-mouse button – activate pop-up menus.
- Right-mouse button – track the static icon area.

In addition to these 3 standard mouse buttons, support has been added for the 'Forward' and 'Back' mouse buttons. As with previous versions, the scroll wheel can be programmed also. The default settings and other choices are set in the Tools/Options dialog on the User Preferences tab:



The left-right tilt-wheel, while not programmable, is recognized by the software and by default will operate the horizontal scroll bar (scroll-left, scroll-right).

In ExpertCAD, default behavior is defined when the Ctrl or Shift key is held down while digitizing in the graphics area. Ctrl will select (or unselect) the entity near the cursor (i.e. toggle the selected state). Shift will select the entity near the cursor adding it to the collections of entities currently selected (i.e. add to selection).

Scroll Bars

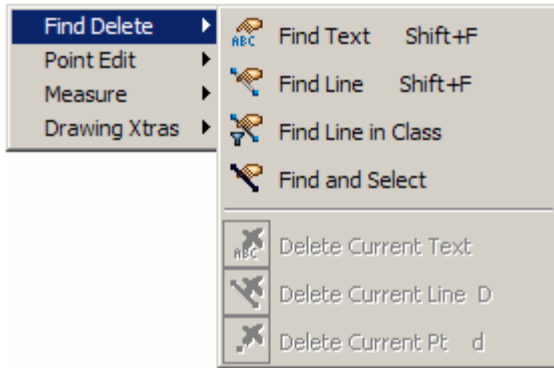
Horizontal and vertical scroll bars for scrolling a drawing left/right, up/down are enabled by default in ExpertCAD. The scroll bars function according to Windows standard. If you wish reclaim some graphics area, the scroll bars can be disabled and hidden in the Tools/Options dialog.

Drag & Drop Support

Windows-standard drag & drop of files into the application window is supported. In ExpertCAD, if a file is currently being edited, the file is inserted into the drawing otherwise the file is opened and becomes the current file being edited. In ExpertCAM, drag & drop functions the same as File/Open. In all cases only 1 file can be specified and it must be of a file format that the application can read.

Popup Menus

Popup menus are Windows-style pull-right menus as opposed to the stacking-style in previous releases. The title of the pull-right appears in the main menu with its contents in the pull-right.



Pop-up menus are used for those features/functions that are dependent on the position of the cursor at the time the function is used.

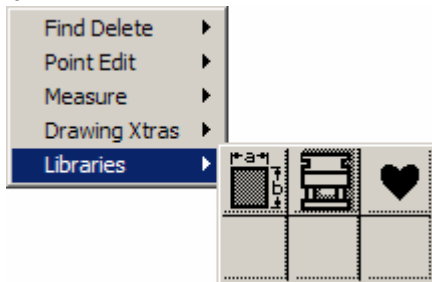
If preconditions for using an item in the menu are not met, the item is disabled. In this example, there is no current text so the menu item Delete Current Text is disabled.

All items in popup menus (graphics and textual menus) have 1-line help messages that are displayed in the status bar when that item is tracked.

Many of the features implemented in popup menus in previous releases have migrated to the pull-down menus. Operations that require pre-positioning of the cursor are implemented as popup menus.

The 'menustick' (default menu item) feature is implemented in a Windows standard manner. The default item is in bold text and can be invoked by choosing the text in the main menu.

If you use the library feature, the modules you specify to use will be added to the main popup menu:

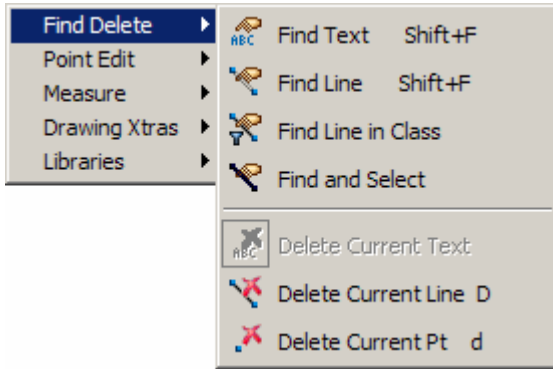


In this example, the parametrics, mold components and user library are requested.

To bring up the user interface for the library, choose its icon in the graphics popup menu.

Note that there are 1-line help messages shown in the status bar when you track over an icon in any graphic popup menu.

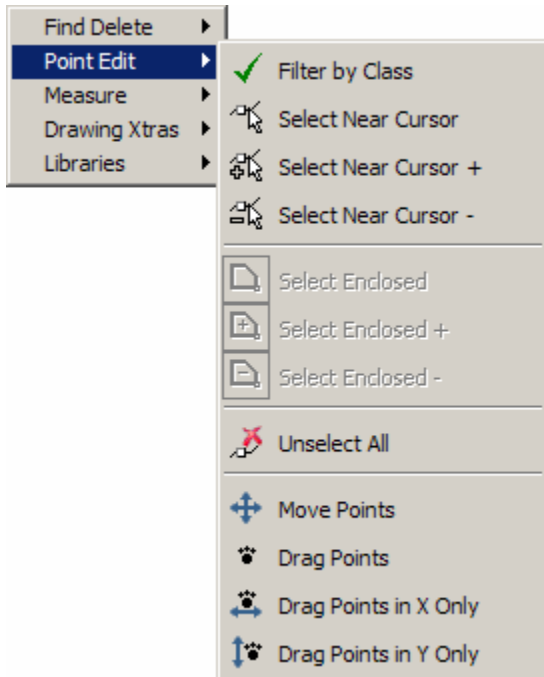
Here is an overview of the new set of popup menus in ExpertCAD 2007:



The Find Delete menu is a renamed version of the former FIN/DEL menu.

The same features and functions are provided with menu items that provide for greater clarity.

Notice that menu items are disabled when conditions for the proper usage do not exist.

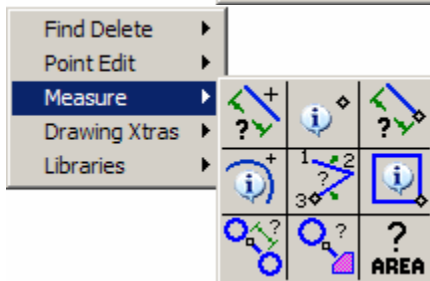


The Point Edit menu is a renamed version of the former PT EDIT menu.

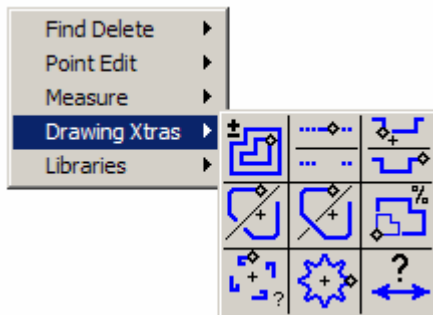
The menu retains the same order and functionality as previous releases. The menu items themselves have been modified for clarity as to their purpose.

Note the menu item Filter by Class has a checkmark next to it. This indicates that the Filter by Class is currently enabled. Choosing this menu item will toggle its state on and off.

Here again, menu items are disabled when pre-conditions don't allow their use. In the example to the left, we don't have a current line enclosing any entities so therefore the Select Enclosed functions for point selection are disabled.



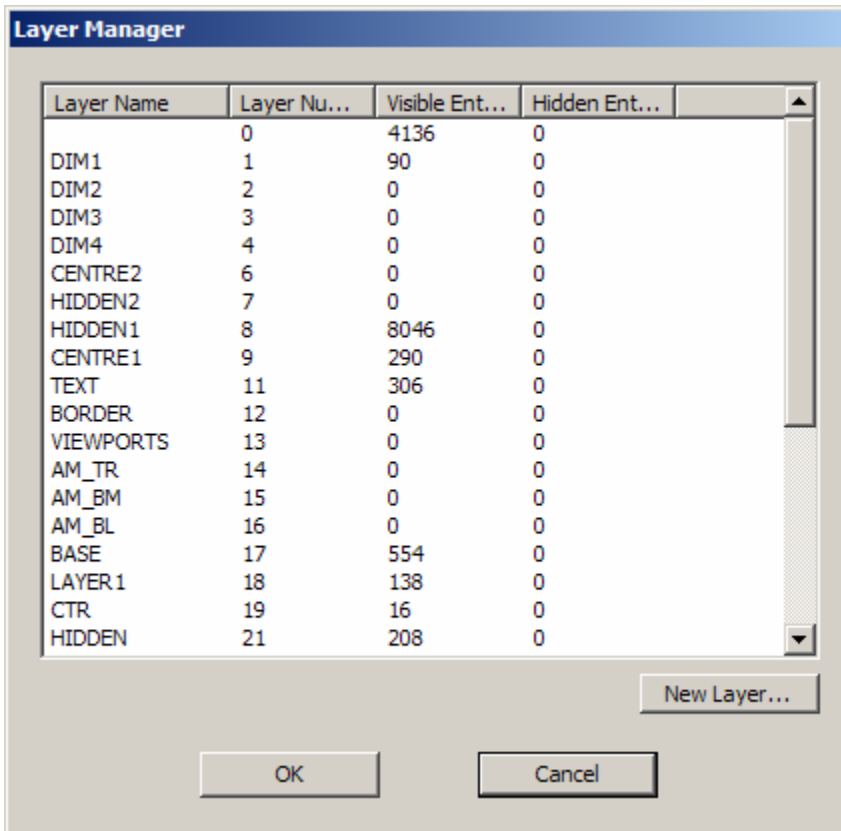
The Measure popup menu is functionally the same as in previous releases. For clarity the icons have been revised in appearance and 1-line help is provided in the status bar when an icon is highlighted.



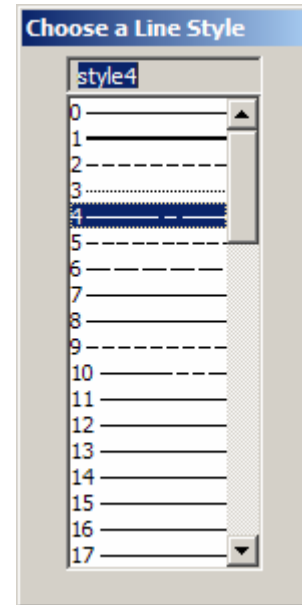
Drawing Xtras is a replacement for the former DRAW popup menu. Included in this menu are the features that modify the current line most of which are dependent on the cursor position.

Dialogs

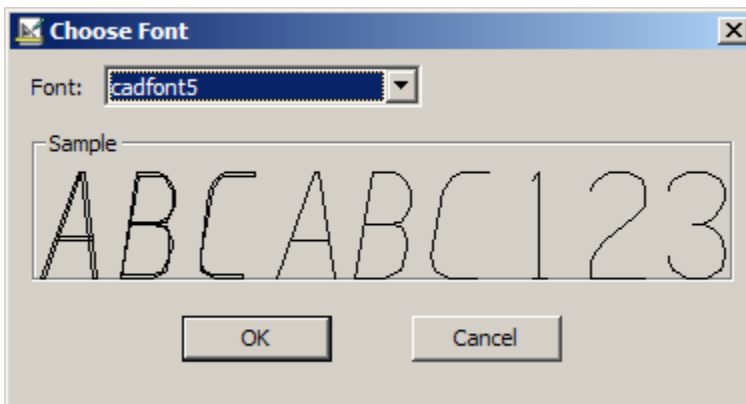
Windows-style dialogs are used throughout the applications. The former proprietary dialog look and feel has been discarded. In addition to Windows-standard dialogs, specialized dialogs have been added for consistency where required:



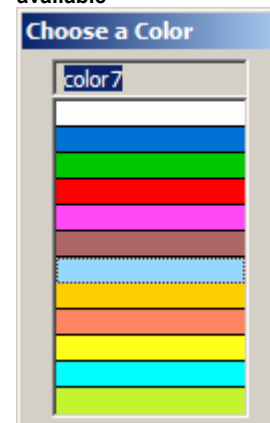
The Layer Manager dialog has been converted to a Windows dialog and reworked to make it easy to delete, rename or create new named layers because they work per Windows standard.



The Line Style dialog shows the true dash pattern and width of each line style available



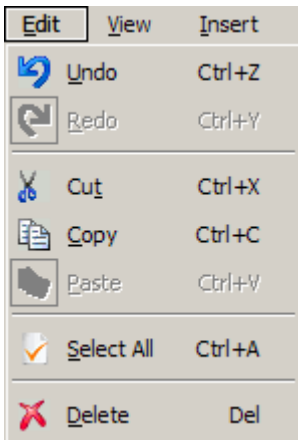
The Font dialog lists all fonts currently available and provides a preview of your selection.



The color dialog shows all available color choices with one-click selection.

ExpertCAD Menus

The menu set has been modified to conform closely to Windows standards and common practice for organization and function. The menus themselves follow Windows standards for usage:



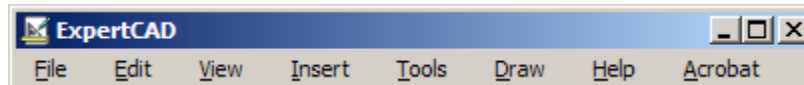
The menus can be navigated using your mouse or the keyboard by using the Alt keystroke in combination with other keystrokes. Underlined characters indicate the key to use to navigate to that item.

If there is a keystroke (short command) associated with a menu item, it will be listed on the menu to right of the text for that item (e.g. the Del key will perform the same function as Edit/Delete).

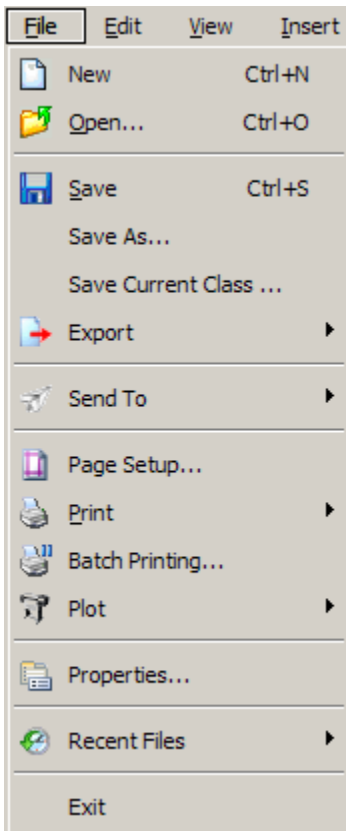
In all cases, menu items are disabled if the proper conditions do not exist to use that item. In this example, Redo is disabled because we have not done an Undo yet. Similarly Paste is disabled because there is nothing suitable on the clipboard to paste into ExpertCAD.

When you track over a menu item, a 1-line help message will be shown in the status bar to describe its function.

The new menu set for ExpertCAD is shown below:



The following is an overview of the menus that have changed or have been added for ExpertCAD 2007:



New – start a new drawing. This is the same function as the former File/Clear menu item.

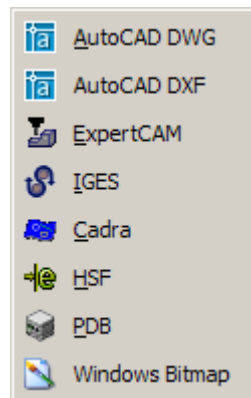
Open – edit a drawing. This is the same function as the former File/Edit menu item.

Save – save the current drawing.

Save As - save the current drawing to a different file name. *Note that the file specified becomes the current edit file.*

Save Current Class – save only those drawing items in the current class to a file. Same function as the former Save Class menu item.

Export – write the drawing to a file in your choice of formats:

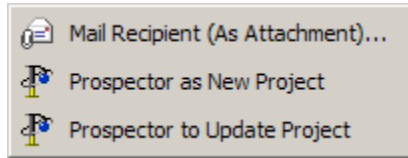


Options for exporting files can be set on the Import/Export tab of the Tools/Options property sheet.

HSF is a new option to output the drawing in Hoops Streaming Format. This format can be read by popular viewing programs such as SolidWorks eDrawings.

Windows Bitmap writes the drawing as a .bmp file full size according to the current screen resolution and at the color depth (32, 24, ... bits per pixel).

Send To – forward the drawing data as e-mail or to SofTech's Prospector application for NC machining:



Note that the Mail option may not be compatible with e-mail programs other than Microsoft Outlook.

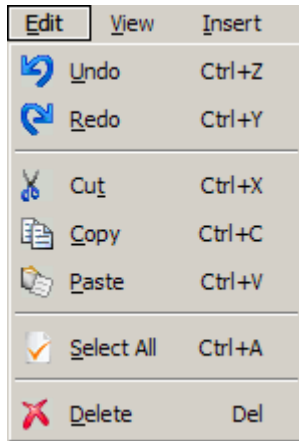
Page Setup – establishes the printer, paper size, orientation and margins you wish to use as a default for printing.

Print – print all or part of the drawing. Printing options including precise scaling can be specified on the Print/Plot tab in the Tools/Options property sheet.

Plot – plot all or part of the drawing using the WinPlot HPGL/2 plotting application.

Properties – displays the drawing properties dialog. This replaces the Drawing Mgmt dialog in previous versions.

Recent Files – lists the last 8 most recent files that were opened so you can quickly edit one of them by choosing it from this menu.



Undo – reverses the effect of the last change to the drawing. Up to 10 levels of undo/redo are supported.

Redo – roll-forward the last operation that was undone.

Cut – puts only the selected drawing entities on the system clipboard and removes them from the drawing.

Copy – puts only the selected drawing entities on the system clipboard.

Paste – inserts the contents of the clipboard at the current point and makes those entities selected.

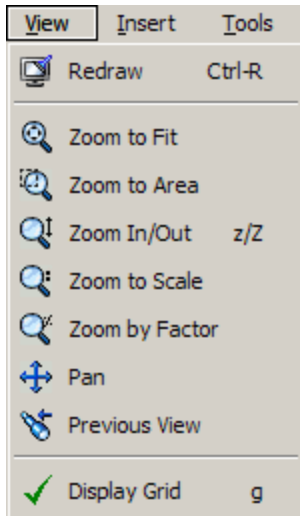
Select All – selects all drawing entities.

Delete – deletes all selected drawing entities.

Notes on Cut/Copy/Paste....

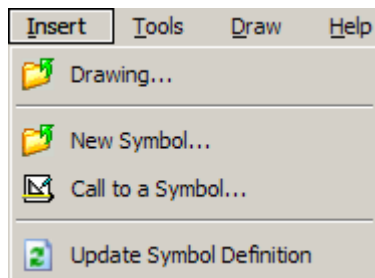
When you use Cut or Copy, the selected entities are written to the system clipboard in ExpertCAD format and as a Windows bitmap. This allows you to paste the items you selected into another session of ExpertCAD as drawing entities or into another application that supports bitmaps. For example, you can use Edit/Paste in Microsoft Word to insert an image of what you copied in ExpertCAD into a document. The bitmap picture created by Cut/Copy is dependent on the zoom scale at the time you cut or copy the image. If you need a smaller bitmap image, zoom out where zooming in will create a larger image. It is not necessary for the selected entities to be visible in the graphics area for a complete image to be created.

When you use Edit/Paste in ExpertCAD, it will choose to use native ExpertCAD data if it is available on the system clipboard. If that format does not exist, it will choose to use a text format if that is available and insert the data as a text note. This allows you to copy textual data from Microsoft Word or Excel into ExpertCAD.



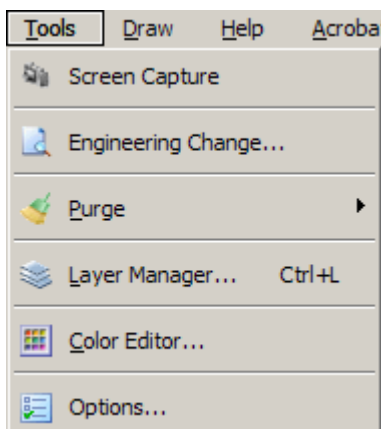
The View pull-down menu replaces the former popup View menu in previous releases.

- Redraw** – clears the graphics area and redraws.
- Zoom to Fit** – fits the drawing to the graphics area.
- Zoom to Area** – zooms into an area you indicate using the mouse.
- Zoom In/Out** – dynamic zoom in/out using the mouse.
- Zoom to Scale** – set the view scale to a value you specify.
- Zoom by Factor** – scale the view scale by a factor you specify.
- Pan** – dynamically pan using the mouse.
- Previous View** – return the previous view orientation.
- Display Grid** – show or disable a visible grid.



Insert is a new menu that implements certain functions formerly found on the File menu.

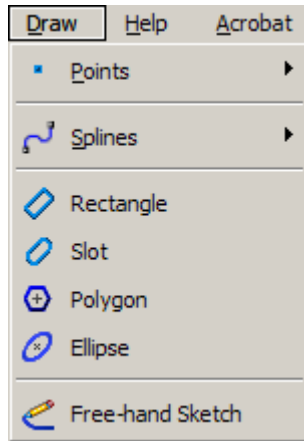
- Drawing** – inserts (merges) a drawing into the current drawing you are working on. This is the same function as the former File/Merge... menu item.
- New Symbol** – creates a symbol from an ExpertCAD file.
- Call to a Symbol** – places a call to a symbol at the current point. This is the same function as the former File/Call... menu item.
- Update Symbol Definition** – updates the definition of a symbol from the contents of its original disk file. This is the same function as the former File/Recall... menu item.



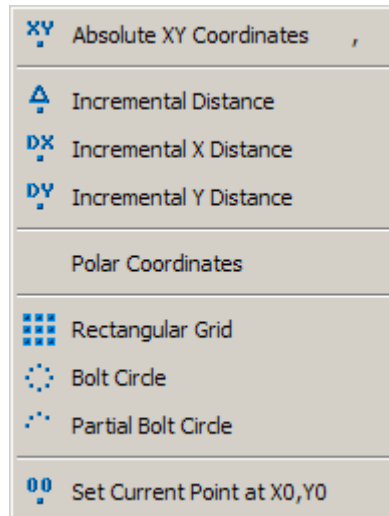
Tools is a new menu that consolidates various features that were formerly scattered throughout other menus in previous versions.

- Screen Capture** – using the mouse, indicate an area of the screen to capture as a bitmap and place on the system clipboard.
- Engineering Change** - posts the engineering change dialog to perform a difference between 2 drawings.
- Purge** – rids the drawing data of unused and/or unwanted text buffers or dimension character definitions.
- Layer Manager** – posts the layer manager dialog to delete layer names, create new layer names or change layer names.
- Color Editor** – posts the color editing dialog to change line colors and/or icon colors.
- Options** – posts the Options property sheet to set preferences.

The Draw menu replaces the former POINT and BUILD popup menu. The same features and functions have been consolidated into this single menu:



The Draw Menu
Tools/Options Property Sheet

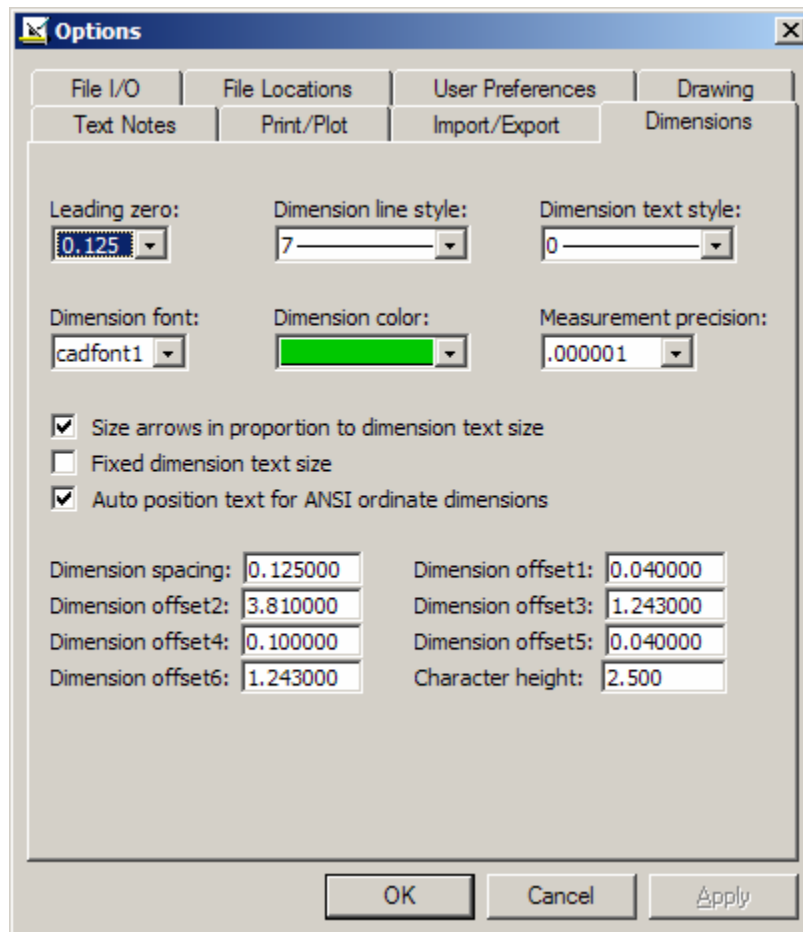


The Points Submenu



The Splines Submenu

The Options property sheet replaces the functions formerly found in dialogs posted from the SET-UP popup menu.



Clicking on a tab on the property sheet brings that dialog to the forefront for entering your preferences.

Click OK to accept changes to all the dialogs. Click Apply to accept changes to the current dialog. The settings will be saved to your personal configuration file:

C:\<Personal application data>\ SofTech\ExpertCAD\ExpertCAD-Setup.cfg

Where <Personal application data> is typically:

Windows 2000/XP - C:\Documents and Settings\<user>\Application Data

Windows Vista - C:\Users\<user>\AppData\Roaming

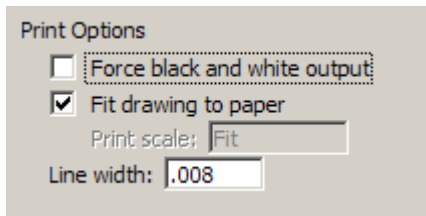
Never edit the file *ExpertCAD-Setup.cfg*. This file is created and re-written by the Options dialog. Any changes or edits you might make will be lost the next time you use the Options dialog to change a setting.

Printing from Windows in ExpertCAD and ExpertView

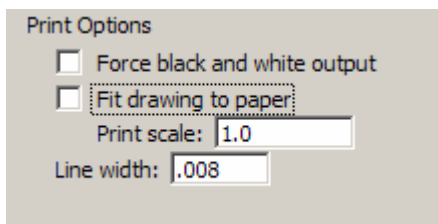
The print feature has been completely redone to allow more flexibility and choices for output.

Page Setup has been added to the File menu to allow you to choose a default printer and set the characteristics for that printer. The choices you make in the Page Setup dialog will be used as the default when you print although you will have the option to choose a different printer and settings when the print dialog is posted. These settings are persistent and will be restored when you start future sessions of ExpertCAD. If you don't use the Page Setup feature, the default settings will be those of the default printer set for your computer.

In the Print/Plot dialog in the Tools/Options property sheet, you can choose to set the scale at which you want the drawing to be printed:



The *Fit drawing to paper* switch is enabled by default. This means that ExpertCAD will scale the output to fit the drawing to the paper size you have chosen taking into account the current margins.



If you want to print at a specific scale, un-check the switch *Fit drawing to paper* then enter the scale at which to print the drawing. In this example, we're using 1.0 which means a full scale drawing.

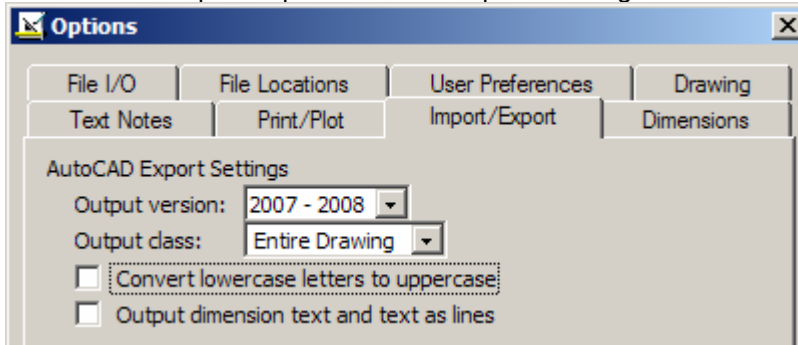
Regardless of whether you choose the Fit option or a specific scale, the scaling method aligns the center of your drawing with the center of the printable area of the page as specified by the paper size and margins. The scale is applied relative to this center point.

Line width replaces the function of the former "Line Width Factor" in previous releases. Line width specifies how wide a 1 pixel wide (e.g. style 0) line on the screen should be drawn when printed. The value specified is always in inch regardless of the system of units.

The ability to print multiple copies is supported provided your printer supports this feature.

AutoCAD 2007/2008 Support

The AutoCAD translators have been updated to allow for read and write of AutoCAD 2007 and 2008 files. If you wish to output this version of the AutoCAD format, choose 2007/2008 from the Output version menu on the Import/Export tab on the Options dialog:



Platform Support

Supported platforms for ExpertCAD & ExpertCAM 2007 are:

Computer	Operating System	Revision Level
Sun SPARC	Solaris	2.5 through Solaris 10
Hewlett Packard PA-RISC	HP-UX	11
Intel & AMD 32-bit Computers	Windows 2000	Service Pack 3 or higher
Intel & AMD 32-bit Computers	Windows XP	All
Intel & AMD 64-bit Computers	Windows XP x64 Edition	All
Intel & AMD 32-bit Computers	Windows Vista 32-bit Edition	All
Intel & AMD 64-bit Computers	Windows Vista 64-bit Edition	All

Important Notes about Platform Support

1. Windows XP x64, Windows Vista 32-bit & 64-bit require the use of the USB style security key. Parallel port security keys are not supported on these operating systems.
2. If you are installing on Windows 2000, you must make sure you have Windows 2000 Service Pack 3 or later installed before you attempt to install ExpertCAD. The software will not install correctly nor will it run if you are not at this level of the operating system.

Installation

ExpertCAD 2007 is intended to be installed in a different path than previous versions of the software.

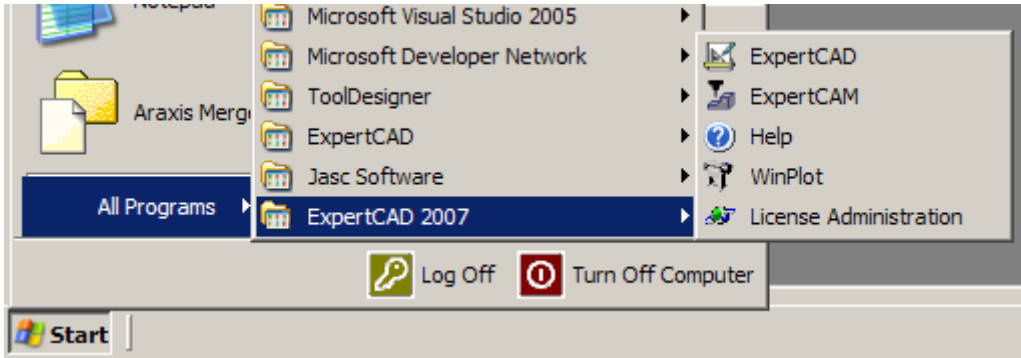
Do not install the software in the same path as previous releases!

ExpertCAD 2007 is intended to run side-by-side with previous releases. You do not need to remove a previous release from your system prior to or after installing ExpertCAD 2007. Treat this release as if you were installing an entirely new product. Both ExpertCAD 2007 and previous releases are treated as completely separate applications as far as Windows is concerned. They don't have anything in common in terms of using system resources.

For these reasons, we strongly recommend you accept the default installation path:

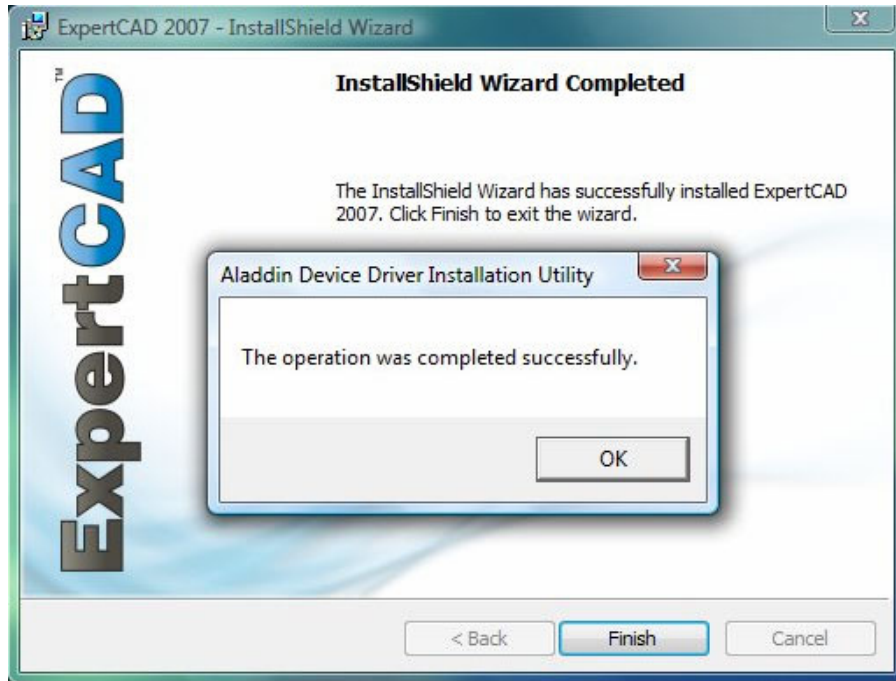
C:\Program Files\ExpertCAD 2007

After installation, a new program group – ExpertCAD 2007 – is created and added to the start menu:



Both ExpertCAD 7.7 and ExpertCAD 2007 are installed on this computer.

One of the final steps during installation is the installation of the driver for Aladdin USB dongles. If the driver has not been previously installed or a newer version needs to be installed, this will be done by the installation program. In previous versions the driver installation was performed without user interaction however with this release, the dialog shown below will be presented:



Click OK when this dialog is presented and the installation process will proceed.

New Paths for Configuration Files

Previous versions of ExpertCAD installed all software components underneath the root installation directory (e.g. c:\Program Files\ExpertCAD). This scheme was problematic because users without administrative rights could not create or modify certain files as needed to configure the software. This is especially true with the Windows Vista operating system. With this release and future releases, all files and directories that a user may need to modify or manage are installed in these directories:

Common application data – this directory contains files and folders that are used or referenced by the software for all users of the computer. The defaults are:

O/S	Path
-----	------

Windows Vista	C:\Program Data\SofTech\ExpertCAD
Windows XP/2000	C:\Documents and Settings\All Users\Application Data\SofTech\ExpertCAD

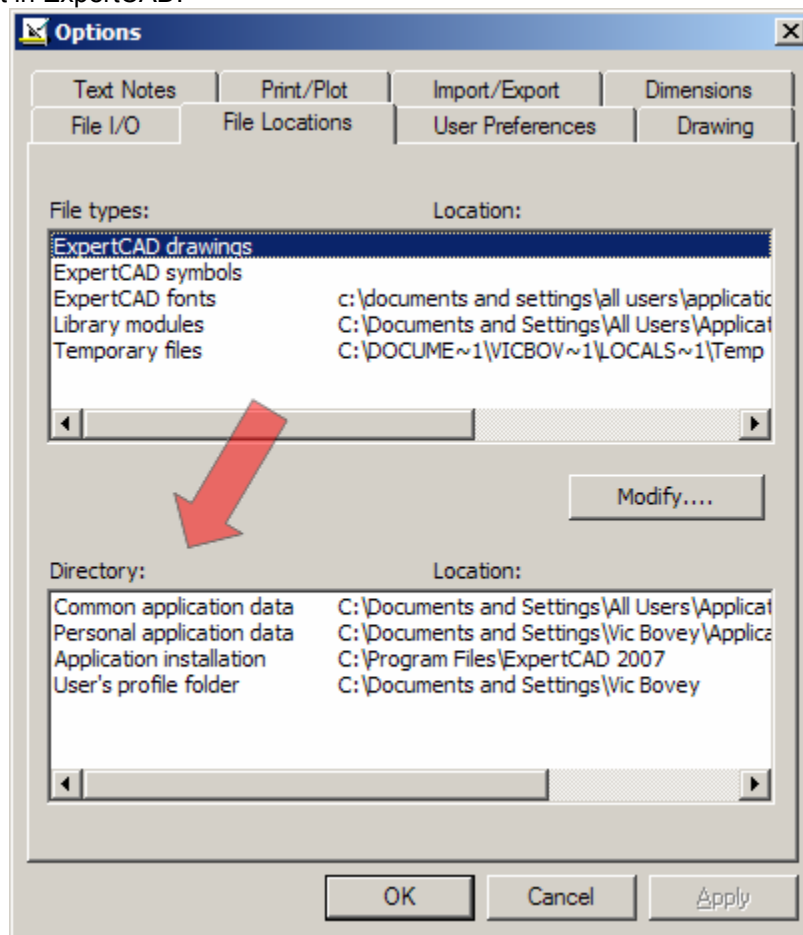
Personal application data – this directory contains files and folders that are used by the software for a particular user of the computer. Therefore this directory will be different for each user. The defaults are:

O/S	Path
Windows Vista	C:\Users\ <user>\appdata\roaming< td=""> </user>\appdata\roaming<>
Windows XP/2000	C:\Documents and Settings\ <user>\application data<="" td=""> </user>\application>

Where <user> is the user login. Underneath these folders, the folder SofTech and subfolder ExpertCAD is created. For example, on Windows Vista:

C:\Users\

If you are unsure about the location of these folders, choose the File Locations tab on the Options property sheet in ExpertCAD:



Data files and directories affected by this change include:

ExpertCAD Stroked Font Files (cadFont1, cadFont2, ...)

Old Path: C:\Program Files\ExpertCAD\fonts

New Path: C:\ProgramData\SofTech\ExpertCAD\Fonts

ExpertCAD Macro Libraries (Init_us, Icons_us, Init_pm, Icons_pm)

Old Path: C:\Program Files\ExpertCAD\expcad\libs

New Path: C:\ProgramData\SofTech\ExpertCAD\ExpertCAD Libraries

ExpertCAM Macro Libraries (Init_us, Icons_us)

Old Path: C:\Program Files\ExpertCAD\expcam\libs

New Path: C:\ProgramData\SofTech\ExpertCAD\ExpertCAM Libraries

AutoCAD Translator Configuration Files

Old Path: C:\Program Files\ExpertCAD\AutoCAD

New Path: C:\ProgramData\SofTech\ExpertCAD\AutoCAD

WinPlot Plotcap.txt File

Old Path: C:\Program Files\ExpertCAD\winplot\plotcap.txt

New Path: C:\ProgramData\SofTech\ExpertCAD\WinPlot\plotcap.txt

Custom Mold Components

Old Path: C:\Program Files\ExpertCAD\expcad\data\mold

New Path: C:\ProgramData\SofTech\ExpertCAD\Mold Components

ExpertCAD User Interface Macro Files

Old Path: C:\Program Files\ExpertCAD\expcad\macros

New Path: C:\ProgramData\SofTech\ExpertCAD\ExpertCAD Macros

ExpertCAM User Interface Macro Files

Old Path: C:\Program Files\ExpertCAD\expcam\macros

New Path: C:\ProgramData\SofTech\ExpertCAD\ExpertCAM Macros

ExpertCAD Example Files

Old Path: C:\Program Files\ExpertCAD\expcad\examples

New Path: C:\ProgramData\SofTech\ExpertCAD\ExpertCAD Examples

ExpertCAD Custom Configuration File for All Users

Old Path: C:\Program Files\ExpertCAD\expcad\global.cfg

New Path: C:\ProgramData\SofTech\ExpertCAD\ExpertCAD.cfg

ExpertCAM Custom Configuration File for All Users

Old Path: C:\Program Files\ExpertCAD\expcam\global.cfg

New Path: C:\ProgramData\SofTech\ExpertCAD\ExpertCAM.cfg

ExpertCAD Custom Configuration File for Current User

Old Path: C:\<User's Profile Folder>\expcad.cfg

New Path: C:\<Personal application data>\ ExpertCAD.cfg

ExpertCAM Custom Configuration File for Current User

Old Path: C:\<User's Profile Folder>\expcam.cfg

New Path: C:\<Personal application data>\ ExpertCAM.cfg

ExpertCAD Settings Established in the Options Dialog (SET-UP menu in previous versions)

Old Path: C:\<User's Profile Folder>\cadsetup.cfg

New Path: C:\<Personal application data>\ ExpertCAD-Setup.cfg

ExpertCAM Settings Established in the Options Dialog (SET-UP menu in previous versions)

Old Path: C:\<User's Profile Folder>\expcam.cfg

New Path: C:\<Personal application data>\ ExpertCAM-Setup.cfg

ExpertCAD Custom Short Key Definitions

Old Path: C:\<User's Profile Folder>\cadshort.cfg

New Path: C:\<Personal application data>\ ExpertCAD-ShortKeys.cfg

ExpertCAM Custom Short Key Definitions

Old Path: C:\<User's Profile Folder>\expcamshorts.cfg

New Path: C:\<Personal application data>\ ExpertCAM-ShortKeys.cfg

ExpertCAD Custom Cursor Stroke Definitions

Old Path: C:\<User's Profile Folder>\cadstrks.cfg

New Path: C:\<Personal application data>\ ExpertCAD-Strokes.cfg

ExpertCAM Custom Cursor Stroke Definitions

Old Path: C:\<User's Profile Folder>\expcamstrokes.cfg

New Path: C:\<Personal application data>\ ExpertCAM-Strokes.cfg

ExpertCAD Custom Colors Defined Using the Color Editor Dialog

Old Path: C:\<User's Profile Folder>\cadcolor.cfg

New Path: C:\<Personal application data>\ ExpertCAD-Colors.cfg

ExpertCAM Custom Colors Defined Using the Color Editor Dialog

Old Path: C:\<User's Profile Folder>\expcamcolors.cfg

New Path: C:\<Personal application data>\ ExpertCAM-Colors.cfg

ExpertCAD Standard Text Note Definitions

Old Path: C:\<User's Profile Folder>\cadnotes.cfg

New Path: C:\<Personal application data>\ ExpertCAD-StandardNotes.cfg

ExpertCAD Custom Quick Menu (Graphic Popup Menu)

Old Path: C:\<User's Profile Folder>\cadpopup.cfg

New Path: C:\<Personal application data>\ ExpertCAD-QuickMenu.cfg

ExpertCAM Custom Quick Menu (Graphic Popup Menu)

Old Path: C:\<User's Profile Folder>\expcampopup.cfg

New Path: C:\<Personal application data>\ ExpertCAM-QuickMenu.cfg

ExpertCAM Post Processor Configuration File

Old Path: C:\Program Files\ExpertCAD\expcam\posts\expcamposts.cfg

New Path: C:\ProgramData\SofTech\ExpertCAD\ExpertCAM-Posts\ExpertCAM-Posts.cfg

ExpertCAM Post Processor Files & Folders

Old Path: C:\Program Files\ExpertCAD\expcam\posts\

New Path: C:\ProgramData\SofTech\ExpertCAD\ExpertCAM-Posts\

During installation, the files and folders that pertain to all users are migrated (copied and renamed) to their proper location. You do not have to manually copy and rename any of these files.

The first time you run ExpertCAD or ExpertCAM, the programs will look for personal configuration files from a previous release. If any of these files exist, they will be migrated (copy and renamed) to reflect their proper location in the new installation scheme.

When installing on a system that did not have a previous version of the software installed, default configuration files will be installed. If you have customized configuration files from a previous release, you will need to copy these to their new location manually.

Closed Track IDs

The following is a list of closed customer and internally generated software enhancements, corrections and modifications included in this release with a synopsis of the problem or enhancement that has been addressed.

ID	Synopsis
62	Call to a symbol causes the screen to erase and redraw unnecessarily.
88	Double-click in the File dialog can cause a point to be added to the current line.
194	Add an option or command to allow a dialog to be posted for choosing directories only.
302	Installation is incorrect & incomplete when installing on a terminal server edition of Windows.
319	Double-click in the File dialog can cause a point to be added to the current line.
394	Installation can cause conflicts with prior editions of ExpertCAD.
419	Add help messages when tracking over graphic pop-up menus to describe their function.
596	Add additional user preferences to ExpertView (scroll lines, printing & plotting options).
605	Choosing pointer focus for window activation can cause the application to hang.
639	ExpertCAD will overwrite files that are designated as read-only.
650	Change the way the "Save As" feature works to conform to Windows standard.
661	Add support for the terminal server editions of MS Windows.
767	Add help messages in the status bar when tracking over menus (pull-down and pop-ups).
791	Add ExpertCAD as an option when choosing Custom for installation.
804	Add a most recently used file listing to the File menu.
819	The menu-stick feature is not working properly for the measure-angle graphic popup.
827	Add ExpertCAD as an option when choosing Custom for installation.
837	Add e-mail "Send to Mail Recipient" as a feature in the File menu.
917	Add the ability to drag & drop a file into an ExpertCAD window.
1011	User interface for sizing balloon notes is not intuitive.
1019	Add a tabbed Options dialog to replace the SET-UP popup menu.
1092	Memory allocation for IGES translation is inefficient.
1098	Installation should not overwrite library macros for mold components.
1179	Change the way the "Save As" feature works to conform to Windows standard.
1252	Add a most recently used file listing to the File menu.
1337	Add ability to change the number of lines in the scroll area for ExpertView
1338	Add user interface to the shrink factor for printing to ExpertView.
1428	Add ability to be able to re-program the pull-down menus from a macro.
1433	Change the File menu to conform to Windows standards for application software.
1449	Application does not start unless the user has write privileges for eXceed directory.
1465	Contents of some dialog items are cleared when a resize event occurs.
1546	Add ability to be able to re-program the pull-down menus from a macro.
1565	Cursor sometimes jumps across the screen when choosing an item from the Measure popup.
1566	Popup menus post off the screen if the cursor is too close the edge of the window.
1638	Ensure the proper extension (.dxf or .dwg) is added to the file name when writing to AutoCAD.
1752	Increase the number of icons that can be inserted into a graphic popup menu.
1831	Remove unwanted entry in system registry for printing.
1871	Remove icon pad for choosing a library.
1872	The per-bisector construction line feature fails if point is at the center of a circle.
1892	ExpertCAD will sometimes not allow a read-only file to be opened.
1902	The right Alt key does not function properly. Should give focus to the menus.
1913	Popup menus post off the screen if the cursor is too close the edge of the window.
1914	Cursor position is incorrect if the measure graphic popup is posted to close window edge.
1915	Increase the number of icons that can be inserted into a graphic popup menu.
1973	Add help messages when tracking over graphic pop-up menus to describe their function.
2082	Screen does not remain inverted if File/Clear is chosen.
2123	The appearance of the pull-down menus is poor when running with an inverted screen.
2201	The set-lib command sometimes fails to function properly.
2211	The count in the layer dialog is off by 1 for lines.
2225	Missing menu item "What's New" in the Help menu for ExpertView.
2247	Add ability to get the full path names for system variables line INSTALL_PATH.
2266	File dialog should be posted the first time a call to a symbol is requested.

2267	The "Circle Tangent to 2 Entities" construction line doesn't work if 2 circles are input.
2271	Default action for the short key 'Del' should delete all selected entities.
2318	Add e-mail "Send to Mail Recipient" as a feature in the File menu.
2331	The default font for dialogs is poor. Would prefer a larger font size.
2384	Add Windows-style dialog and behavior for the Find Text feature.
2389	Remove dependency on an X-Windows server for display.
2393	Add ability to save a drawing in HSF format.
2489	Add ability to reprogram what the mouse wheel does.
2499	Titles in some dialogs are not correct. Title should reflect the function of the dialog.
2505	Add support for the tilt-wheel mouse feature.
2506	Add support for the Forward & Back mouse buttons.
2512	Revise installation scheme to put configuration files in the appropriate directories.
2530	Capture feature is broken.
2531	Revise installation to place help files in a directory separate from program files.
2543	Entering text into a edit box in a dialog gets erased if a redraw occurs.
2544	This section in ExpertCAM gets distorted when its direction is reversed.
2550	Incorrect processing messages for IGES translator.
2551	The .txt filter should be used in the file dialog for the File to Current Text feature in ExpertCAD.
2552	Title block in this AutoCAD DWG drawing is missing after translation to ExpertCAD
2571	Embed Microsoft-standard version information in all binary executable files.
2579	This IGES data file will not convert to ExpertCAD format.
2580	Add default behaviors for Ctrl-click and Shift-click mouse events.
2583	Add the ability to write IGES data by class in ExpertCAD.
2585	Unnecessary and unwanted fonts are being installed when ExpertCAD is installed.
2594	When ExpertView is installed by itself, the GNU software does not get installed.
2595	Diameter dimensions (dimen 6) does not always draw in the dimension color (UNIX only).
2596	The -QB command line option for batching does not work in Version 7.7 of ExpertCAD
2598	This DXF file will not convert to ExpertCAD format.
2601	This AutoCAD DWG file will not convert to ExpertCAD format.
2617	This AutoCAD DWG file will not convert to ExpertCAD format.
2622	When using wide lines, arrowheads for dimensions extend past the leader lines in PDF output.
2624	ExpertCAM is ignoring the go-to directory setting when working with databases.
2628	Batch output from WinPlot can be different than when it is run interactively.
2630	Calls to symbols with invisible entities become visible when converted to AutoCAD format.
2631	The AutoCAD solid fill entity in this file is not converting properly to ExpertCAD format.
2636	Can't read this Cadra file into ExpertCAD on an AMD system. Intel-based computers are OK.
2637	Can't convert this IGES file to ExpertCAD.
2638	ExpertCAD can't read this Cadra file.
2639	Confusing errors emitted if the radius of a circle tangent to 2 circles is too small.
2640	This DXF file will not convert to ExpertCAD format.
2642	Add a command line option to allow selection of ExpertCAD or ExpertView license.
2643	This DXF file will not convert to ExpertCAD format.
2644	2 text notes in this AutoCAD drawing are not being translated properly.
2646	Block entities in this AutoCAD file that are not scaled correctly when translated to ExpertCAD.
2647	Add support for reading & writing AutoCAD 2007/2008 files.
2652	A segmentation violation error is reported when this ExpertCAD file is edited.
2653	Purge text buffers should not report buffers associated with text notes as unnecessary.
2655	Enhance Cut & Copy to place a bitmap of the data on the clipboard.
2656	Can't convert this IGES file to ExpertCAD.
2657	Can't read this Cadra file into ExpertCAD.
2658	On edit, clear out all non-standard dimension characters before reading the file.
2659	Disabling the auto position text feature for dimensions doesn't work for vertical dimensions.
2661	Writing a PDF file causes ExpertCAD to think that the drawing has changed somehow.
2662	Add the ability to print multiple copies of a drawing.
2667	The text in this AutoCAD drawing is shifted slightly in X when translated to ExpertCAD
2668	Default the system of units used as the default based on the locale information from Windows.