

TOOLDESIGNER™

HIGH PERFORMANCE MOLD DESIGN

ToolDesigner Release Summary

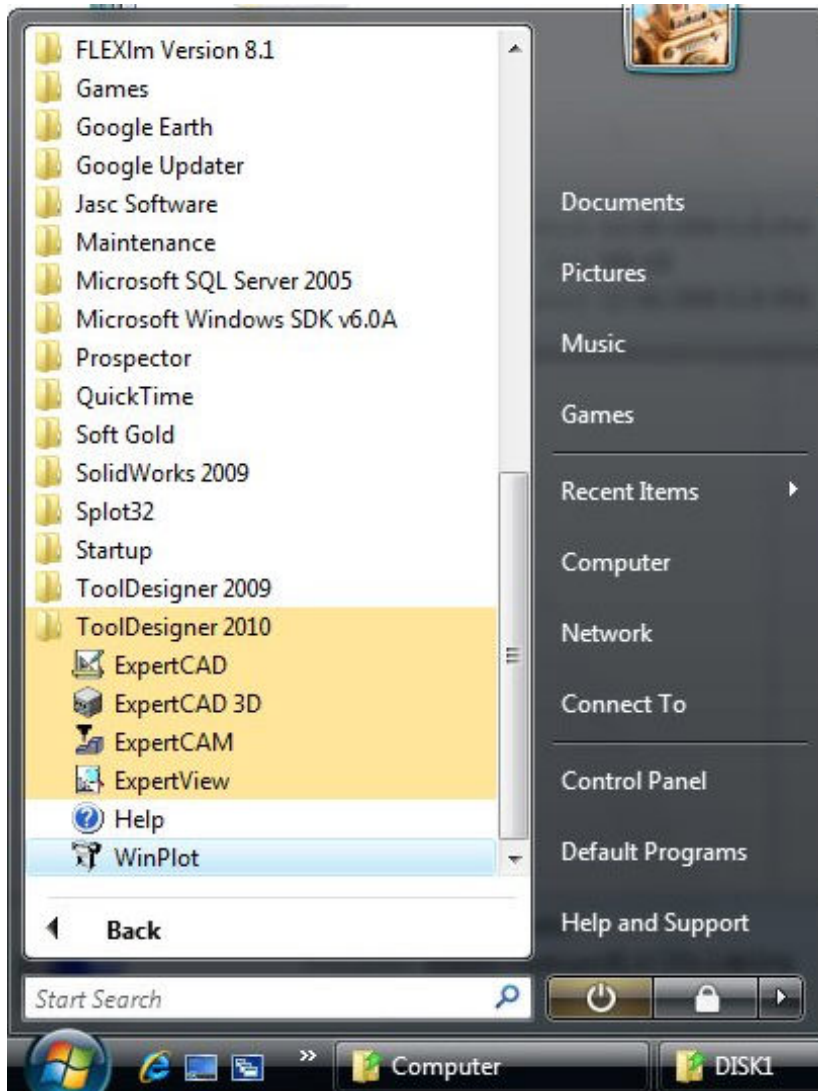
February 2010

Overview

ToolDesigner 2010 is major release that includes significant enhancements as well as customer requested software modifications and corrections. This release summary describes the software changes.

Installation

ToolDesigner 2010 is installed on your system as though it is a new application. It will not overwrite programs from a previous installation of ToolDesigner.




ToolDesigner 2010 is installed totally separate from previous installations.

On this computer, both ToolDesigner 2009 and ToolDesigner 2010 are installed.

Programs and program data installed in the Program Files directory are installed in the sub-directory ToolDesigner 2010.

If you are upgrading from a version prior to ToolDesigner 2009, we suggest you review the release summary for ToolDesigner 2009 in addition to this document because of the significant

changes made for that release. Release summaries for previous versions are available by choosing “Whats New” from the Help menu of any of the ToolDesigner applications.

 Due to the many enhancements added to the applications for this release, the native binary format for files saved by ExpertCAD and ExpertCAD 3D has changed. This means that older versions of the software (ToolDesigner 2009 and earlier) will not be able to read data files written by the 2010 applications. As is always the case, the ToolDesigner 2010 applications can read all older versions of the native file formats.

Microsoft Windows 7 Support

ToolDesigner 2010 is compatible with both the 32-bit and 64-bit version of Microsoft Windows 7. This is the first release of ToolDesigner to provide support for the native Windows 7 operating system. The table below lists the supported operating systems for ToolDesigner 2010:

Operating System	32-bit	64-bit	Revision Level
Windows 7	✓	✓	All
Windows Vista	✓	✓	All
Windows Server 2008	✓	✓	All
Windows XP	✓	✓	All
Windows 2000	✓	✗	Service Pack 3 +

Operating System Notes:

- ToolDesigner 2010 will be the last release for Windows 2000. Although future releases may run without incident on Windows 2000, the software will not be tested on this operating system prior to release.
- Windows Vista, Windows Server 2008 and Windows 7 do not support parallel port dongles. Only USB dongles are supported for these operating systems.
- ToolDesigner 2010 includes the latest driver for the Aladdin USB dongles. The driver is automatically installed if the installation program detects that it is required to support the operating system that the software is being installed on.

Software Licensing

Floating Licensing

ToolDesigner and ExpertCAD have been upgraded to use the latest technology from Acreso Software - FLEXNet Version 11.7. FLEXNet replaces FlexLM for installation and administration of floating licenses.

If you are currently using FlexLM to license ToolDesigner or ExpertCAD, you must upgrade to the new FLEXNet software concurrent with upgrading to ToolDesigner 2010. The new FLEXNet software is included on the CD for ToolDesigner 2010 in the subdirectory FLEXNet.

Please refer to the installation guide in the online Help for ToolDesigner for more information about setup and administration of floating licenses:



USB Driver Update

As part of the software installation process, a new driver for the Aladdin HASP USB dongle will be installed if necessary. This new driver supports native Windows 7 and Windows Server 2008. If you choose to upgrade your computer to Windows 7, it may be necessary to upgrade the driver manually if it does not automatically update itself. To do this, run the program "hinstall" with the "-i" option from a command prompt window:

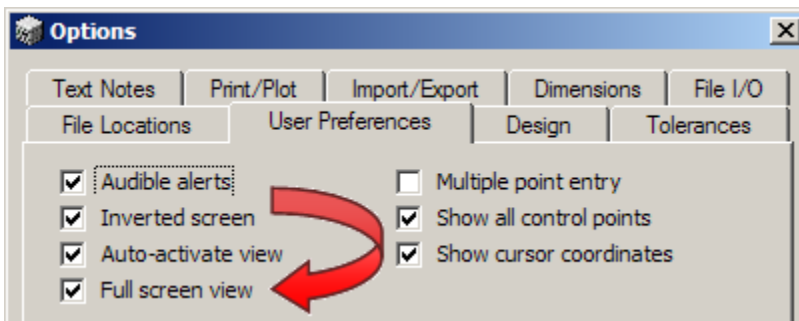
```
C:\>cd "c:\Program Files\ToolDesigner 2010\bin"  
C:\Program Files\ToolDesigner 2010\Bin>hinstall -i
```

Updating USB & Parallel Port Dongle License Codes

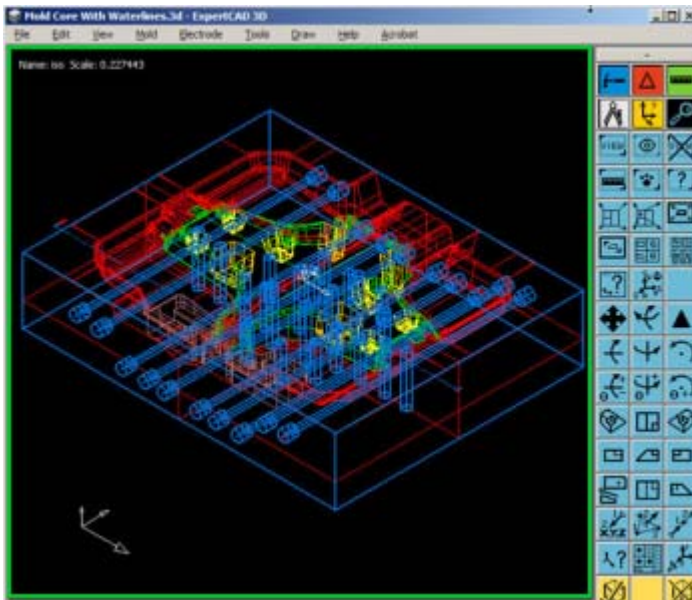
If your USB or parallel port dongle is licensed to run ToolDesigner 2009, you will not need a new license code to run ToolDesigner 2010. All versions prior to ToolDesigner 2009 will require a new license code. Contact SofTech administrative services at 248-458-0359 if you wish to upgrade your license(s).

Full Screen Graphics Mode in ExpertCAD 3D

The option to use the entire graphics area in ExpertCAD 3D as a single view of the design has been added for the 2010 release:



Enable Full screen view in the Tools/Options dialog in the tab User Preferences.



When using a single 3D view, that view will automatically be resized to fill the available graphics area. When zooming or panning, the commands are relative to the view.

Faster Dynamic Graphics in ExpertCAD 3D

The graphics methods for dynamic rotate, pan and zoom have been improved to dramatically increase the speed at which the next scene is calculated. Instead of redrawing each entity one-by-one to the screen when a new scene has to be displayed, the entire scene for all entities is computed in the background and shown to the screen in 1 graphics operation. This makes for much more smoother dynamic rotations and eliminates the annoying blinking phenomenon prevalent in previous versions.

Graphic Enhancements

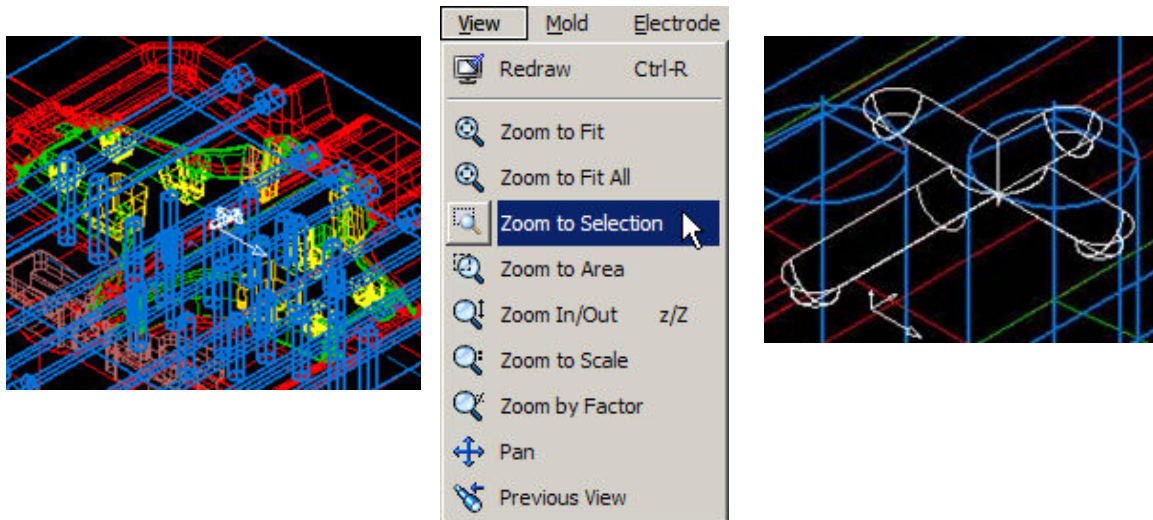
Minimizing Redraws - The software has been revised to minimize the redraws caused by dialogs. When a modal dialog is posted, Windows will attempt to save as a bitmap the underlying portion of the screen where the dialog is displayed. When the dialog is dismissed, the bitmap for that area is restored hence avoiding a redraw. Generally this is possible for most modal dialogs provided the dialog is not moved by the user once it is posted.

If a portion of the screen must be repainted, care is taken to redraw only those view(s) and entities that were in the vicinity of the damaged area.

If the entire screen needs to be redrawn because of an exposure event or a window resize, the entire scene for each view is recalculated in the background then shown to the screen in a single graphics operation. This makes for faster redraws than previous versions which would serially redraw each view and each entity one-by-one to the screen.

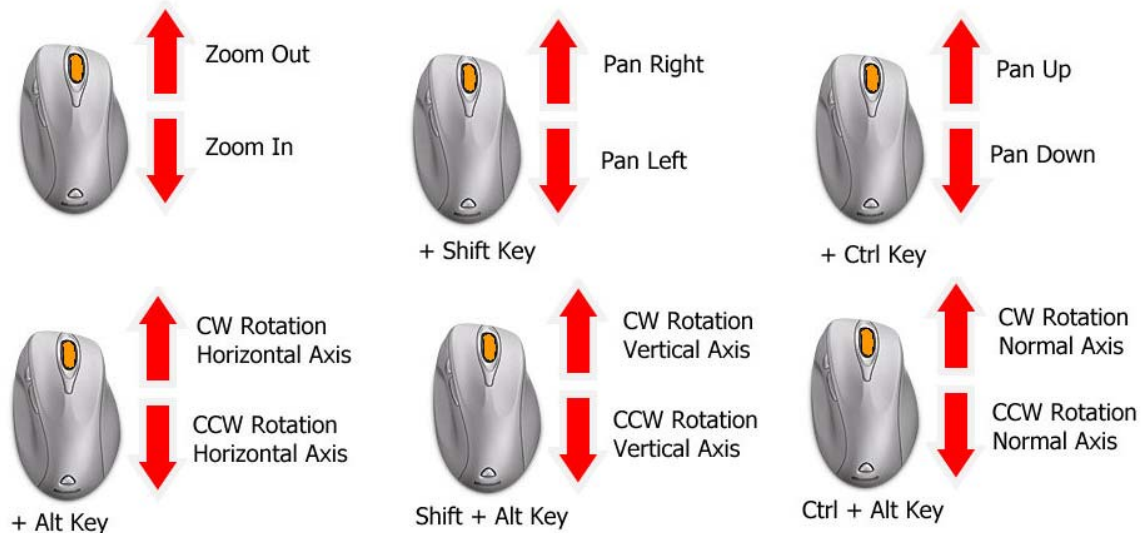
Clearly Distinguishing Selected Entities - When all or a portion of the graphics area is redrawn, selected entities are drawn last in ExpertCAD 3D. This is particularly useful in cases like extracting edges of surfaces (the 'e' short command) where the selected profiles are coincident with the surfaces. By drawing the selected profiles last, it's easier to keep track of the data when the model or window needs to be resized or repositioned to work in a different area.

Zoom to Selection – This new viewing feature has been added to the view menu for both ExpertCAD and ExpertCAD 3D:



Select the geometry you wish to zoom into then choose **Zoom to Selection** to fit the selected geometry to the current view.

Using the Mouse Wheel - The behavior of the mouse wheel events has been updated for all the AMT application to produce the same or similar results. For example, zoom-in and zoom-out work in the same manner for ExpertCAD 3D, the rendering plug-in, ExpertCAD, ExpertCAM and ExpertView.



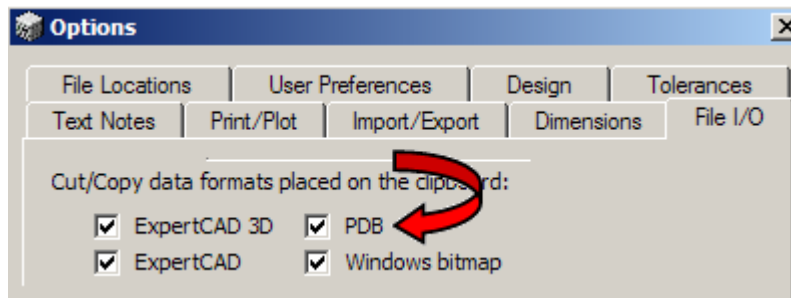
New Options for Dynamic Rotate - The dynamic rotation features of ExpertCAD 3D have been enhanced to recognize when the Shift key is down. The Shift key causes the rotation to choose between the model or view axis for rotation. For example, if the axis of rotation is currently the model axis, holding down the shift key will cause it to change to the view axis.

Importing & Exporting Data

Better Performance Opening Designs in ExpertCAD 3D - When creating a new design or Opening another design in ExpertCAD 3D, a long delay time could occur if a design was currently loaded. In certain extreme cases 60+ seconds or longer was required to delete from current data from memory and reinitialize the software. This has been corrected for the 2010 release to take no more than a few seconds.

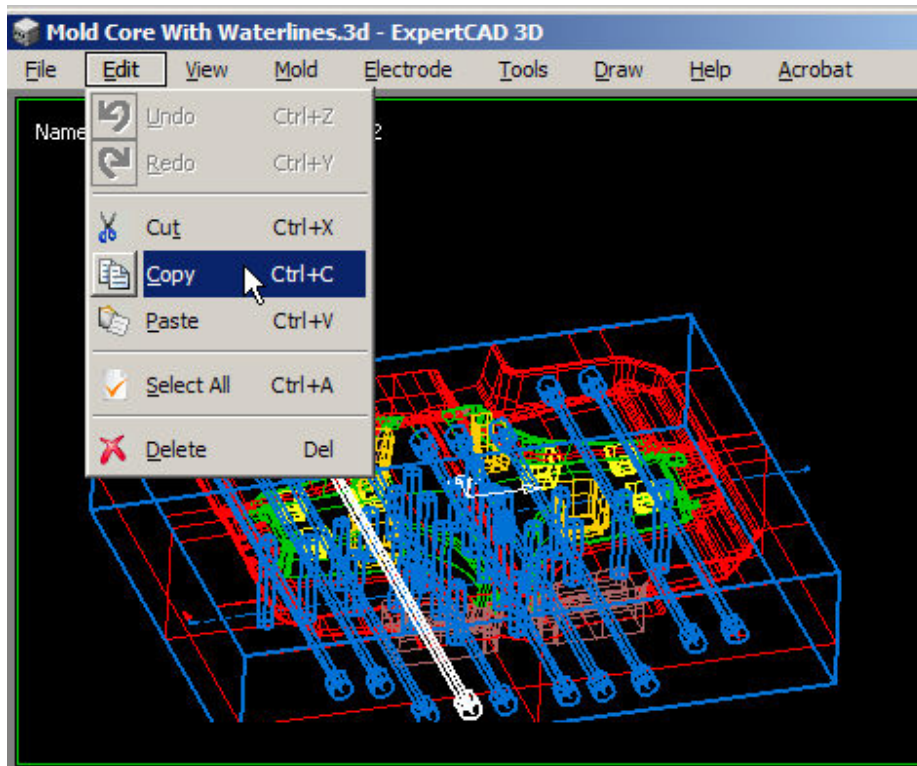
Cut & Copy Data from ExpertCAD 3D to Prospector Design - The Cut & Copy feature in ExpertCAD 3D has been made compatible with the Prospector Design application distributed with Prospector.

Step 1



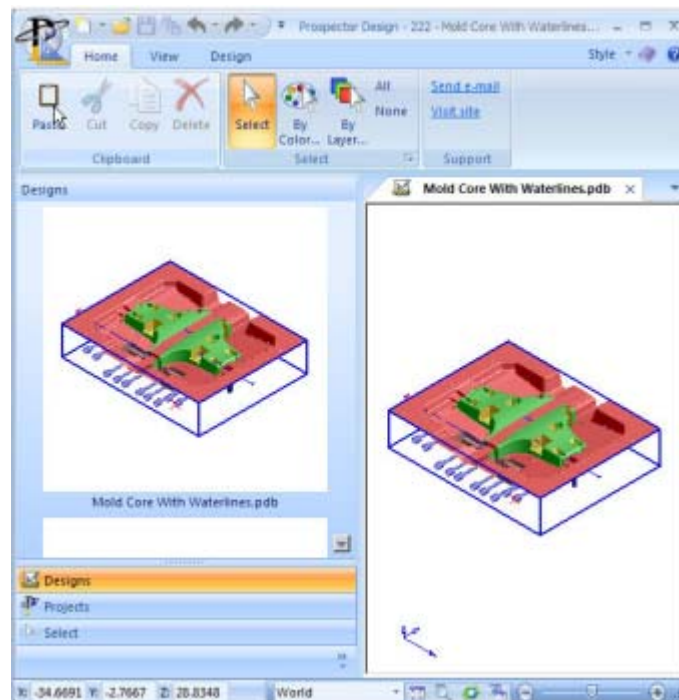
Make sure that the PDB switch on the Import/Export tab of the Tools/Options property sheet is enabled. Prospector Design recognizes this data format for 3D design data.

Step 2



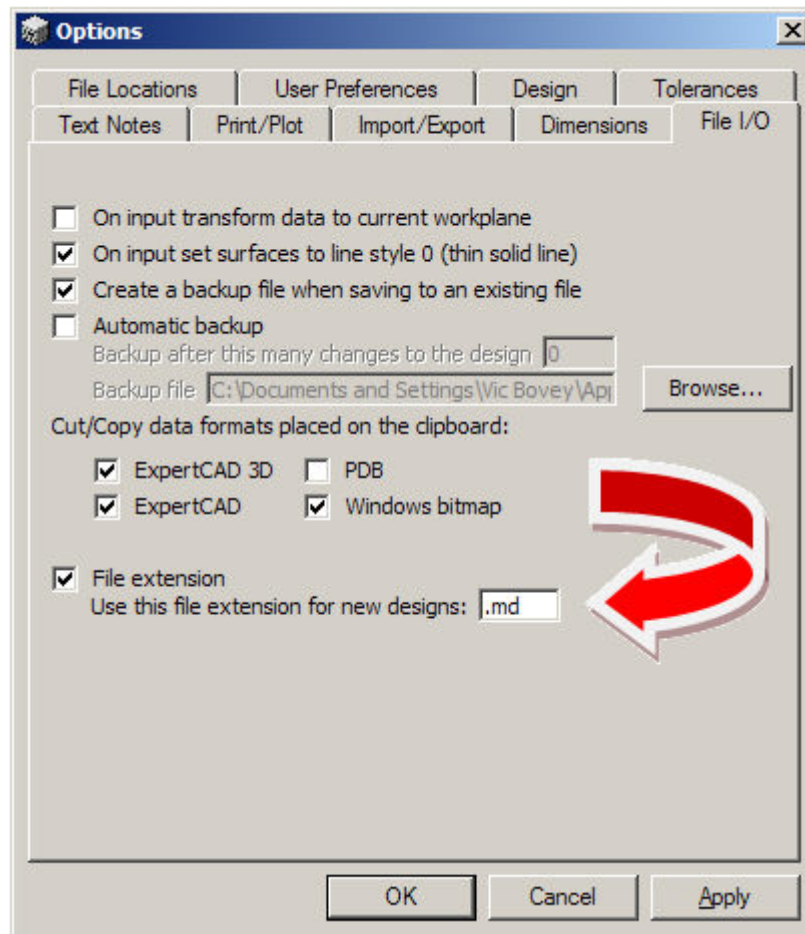
Select elements of the design you wish to machine in Prospector.

Step 3



Choose Paste in Prospector Design to insert the data from ExpertCAD 3D.

Automatic File Extensions - An option has been added to the File I/O tab of the Tools/Options property sheet to allow for file extension to be specified for writing native data files:



The file extension you specify will be added to any newly created data files saved from the application. This feature is available in ExpertCAD 3D, ExpertCAD and ExpertCAM. This file extension is automatically added to the name of any newly created data file that is saved in the native file format that the application writes. It would not apply for example to exporting a file in AutoCAD format or if you open an existing file and later choose File / Save. Only newly created files automatically receive the extension.

Uniquely Named Backup Files - The automatic backup feature uses the name of the file you specify as a template to create a uniquely named backup file. For example, in ExpertCAD 3D if you choose a name "backup.3d" as the name of the backup file, the actual file name written to is named "backup<pid>.3d" where <pid> is the process ID number for that session of ExpertCAD 3D. This assures that concurrent sessions of the application will not attempt to write to the same backup file. When your session ends in a normal fashion (File/Exit), the uniquely named backup file is deleted. Of course if your session should terminate abnormally (power outage, program crash, ...) the backup will not be deleted.

Read & Write AutoCAD from ExpertCAD 3D - ExpertCAD 3D has been modified to allow it to read and export AutoCAD DXF and DWG data files. On import only the model space for AutoCAD data is imported. Layouts (paper space) drawing data is ignored. On export the same features and functions for writing ExpertCAD 2D data apply to writing AutoCAD.

Saving Files - File names typed into the file name text box for Save dialogs are now recognized. In some of the dialogs for different save operations, file names entered in this fashion would be ignored in previous releases.

Writing Bitmaps - Physically large designs in ExpertCAD 3D could cause the generation of a bitmap to fail when exporting the file as a bitmap or when using the Cut/Copy feature. This has been corrected by scaling the bitmap output to a smaller size to ensure that the graphic output can be generated.

Line Styles in PDF - Output in PDF format has been revised so dashed lines are more apparent by automatically switching end-cap styles when drawing dashed lines:

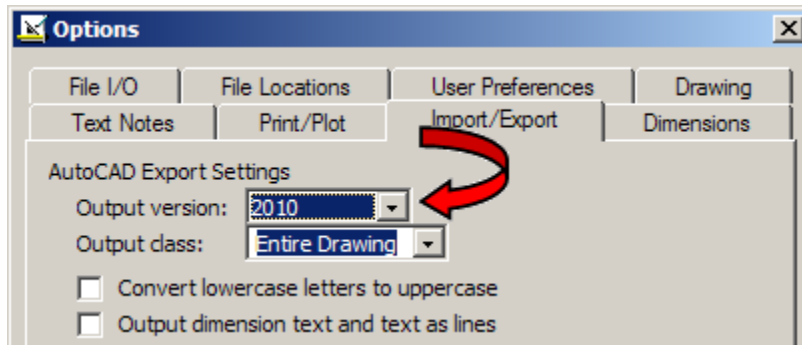


Round end cap style tends to join together the dashes in this style 2 line.



Automatically switching to a butt end-cap style for dashed lines makes the dashing more apparent.

AutoCAD 2010 File Format Support - The AutoCAD translators (acad2ddd and ddd2acad) have been upgraded to support AutoCAD 2010 data files. Previous versions could not import this new version of the AutoCAD file format.

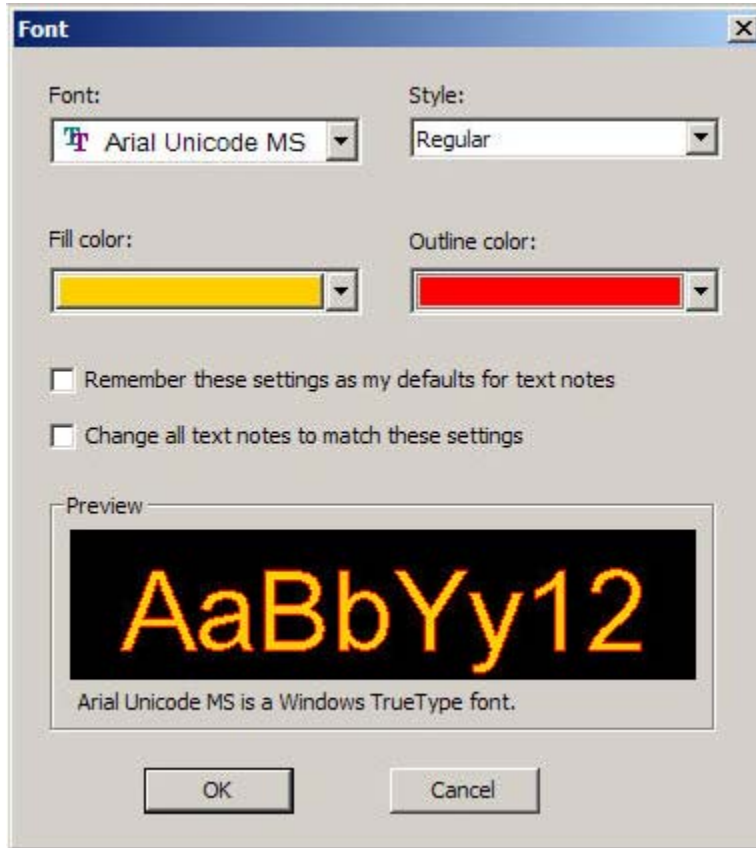


Choose 2010 as the Output version in the Import/Export tab of the Tools/Options property sheet in ExpertCAD if you wish to write the 2010 version of the AutoCAD file format.

Import AutoCAD into ExpertCAM - ExpertCAM has been modified to import AutoCAD data file directly. Choosing either a DXF or DWG file will invoke the AutoCAD translator to convert the data to ExpertCAM native format and import it. Only model space data is converted. Layouts (paper space) data set(s) in the file are ignored. All non-geometric data (annotation, dimensions, crosshatching, ...) is "flattened" into 2D sections.

TrueType Fonts

Support for Microsoft TrueType fonts has been added to ExpertCAD and ExpertCAD 3D. TrueType fonts or native SofTech fonts can be used for any entity type that produces text (dimensions, balloon notes, ...).



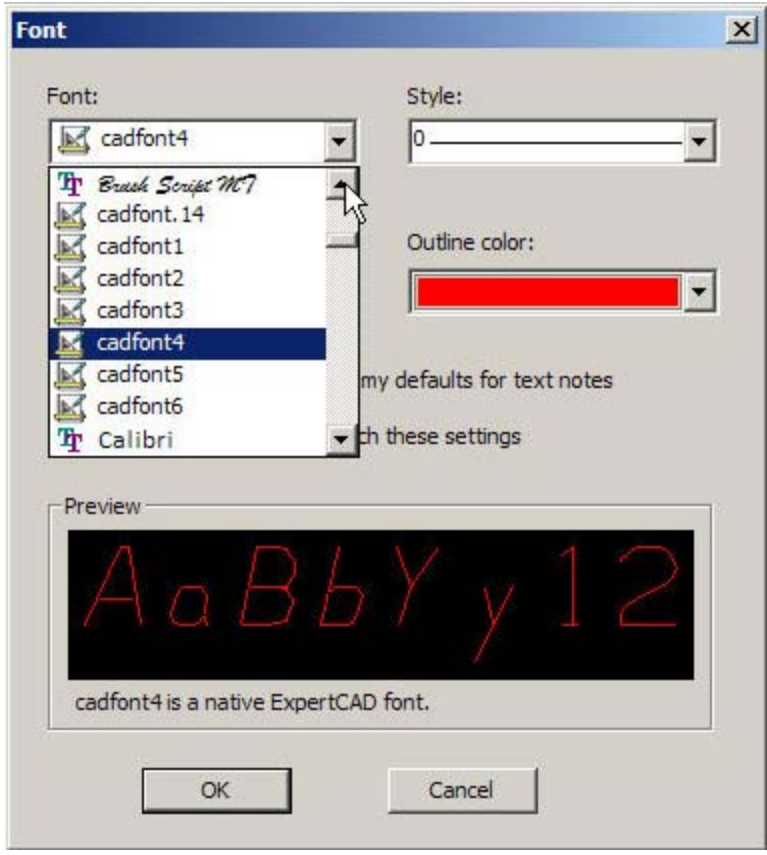
When using a feature that requests a font selection (e.g. change text font icon, change dimension font icon, ...), the Font dialog shown to the left is presented.

The Font combo-box control lists all the TrueType fonts as well as native SofTech stroked fonts available on your system.

If you choose a TrueType font, you will have the option to choose from the Style combo-box (Italic, Bold, ...) if alternate styles are available for that font.

Color for both the fill color and outline of the font can be set as well.

Some variations of the Font dialog will provide switches to remember your settings and/or make global changes to the current drawing or design.



The native SofTech fonts are also available in the font selection combo-box.

If you choose a native font, the Style combo-box lets you choose which line style you wish to use to draw with.

You can also choose an outline color but for obvious reasons, a fill color is not available.

If you are exporting data to a file format that doesn't support text or TrueType fonts, the text is automatically flattened into curves. For example, when importing data into Prospector in PDB format, any text will be output as continuous boundaries which can be very useful for scribe machining.

REDUCE

REDUCE

REUSE

REUSE

RECYCLE

RECYCLE

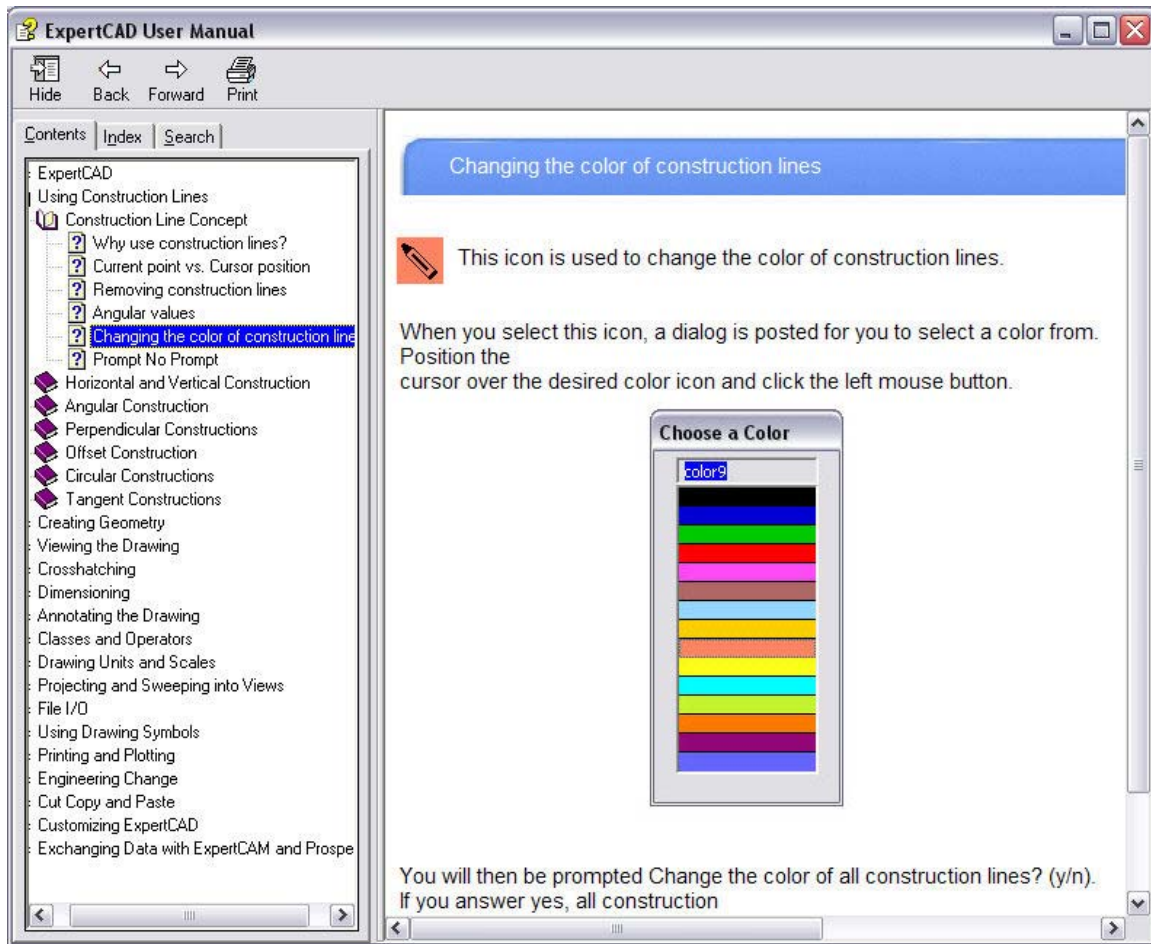
TrueType font used for text in ExpertCAD 3D.

On import to Prospector via PDB, the outline of the font is converted to curves for machining.

In similar fashion, choosing the Flatten class operation in either ExpertCAD 3D or ExpertCAD will reduce annotation that uses TrueType fonts to continuous curves.

Updated Help

Many of the user and reference help documents have been rewritten for this release:



The new format is compiled HTML help (.chm files) instead of Adobe PDF. The content has been thoroughly revised and edited to reflect all the software updates. This on-going process will continue with future releases to address all documentation distributed with the application software.

Maintenance

The fillet wizard in ExpertCAD 3D has been reprogrammed to correct several defects. The radius or radii specified by the user is honored in all cases. The original color and line styles of surfaces that are identified while the wizard is posted are restored to their original state once the fillet is created or if the operation is canceled.

A mouse click in the status bar (e.g to change workplanes) or in the message area to position the window to the top of the stack functions as expected. The previous version could cause the window to "freeze" or the graphics area to not be redrawn.

The remove duplicate entity feature in ExpertCAD 3D has been corrected. The previous version failed to install the needed application program that provides the core capability of this feature.

Interactive performance could degrade significantly when a design with many entities were opened in ExpertCAD 3D. In between commands (choosing a menu selection, icon, ...) the

software was inefficient when updating the menus that were posted. The excessive compute time for updating the menus could slow response time for mouse clicks and result in higher than normal CPU usage. These problems have been corrected for this release.

A defect in the Lock Builder feature in ExpertCAD 3D introduced in the previous release that would cause it to sometimes fail to correctly trim the adjacent surfaces has been corrected.

The Find Nearest Vertex function (short key 'n') in ExpertCAD 3D has been revised to function like it does in ExpertCAD. From the initial point of interest, the software will look out in an ever-increasing search radius until a vertex is found instead of stopping after a pre-defined search radius. In addition to this change, the function will not stop looking in the event there is annotation (dimension, leader notes, ...) in the vicinity of the search.

New colors introduced in the previous release (colors 12, 13 and 14) would fail to print in their correct color.

Lines drawn in color 0 (defaults to white when using a black background) would not be output correctly when bitmap data was written to a file or to the Windows clipboard.

An initialization defect caused writing data in HSF format from ExpertCAD 3D to fail to generate any output unless the render application had been used at least once during the session has been corrected.

Incorrect tolerances used by the Line Tangent to 2 Circles function in ExpertCAD 3D that would cause it to fail sometimes has been corrected.

After using the Flatten feature with the class selected in ExpertCAD 3D, the newly created flattened entities would still be selected however the graphic display of them would not show their selected state.

The Show class operator in ExpertCAD 3D has been corrected to properly erase and redraw the entities in the specified class.

The Rotate 3D class operator in ExpertCAD 3D has been changed to correctly deal with selected entities. On conclusion of the operation, only the last copy of the newly created entities will remain selected instead of all copies being selected.

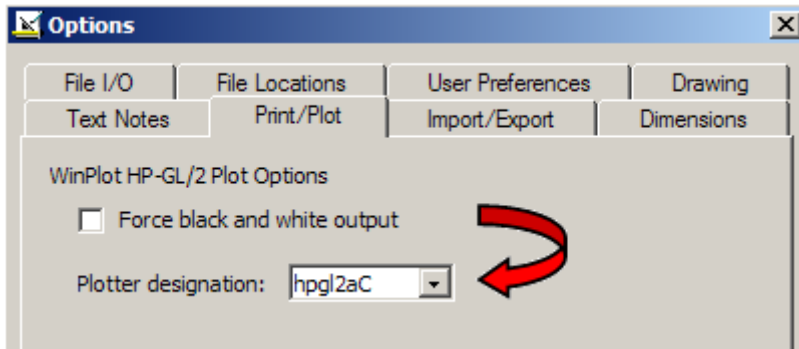
Keyboards with separate numeric keyboards will correctly enter numbers when using the Type In Text at the Cursor feature in ExpertCAD. Previous versions would confuse the '0' key for the short command '0' and the 2,4,8 and 6 for the arrow keys.

Excessively large or small zoom scales in ExpertCAD 3D could cause incorrect graphic display and/or excessive CPU usage in previous versions. The new version imposes reasonable limits on zoom scales to prevent these issues.

Text buffers stored in ExpertCAD files that relate to critical file paths are ignored when those files are edited. For example when reading a file with the text buffer FONT_PATH (file path to use to find native font files) in it, the text buffer will be ignored. Previous versions would restore these paths which may or may not be correct for your software installation resulting in odd results such as not being able to draw text and dimensions because the software was unable to locate the correct font files.

Plotting (plotting to HPGL/2 plotters from the WinPlot application) has been revised to use a uniform intermediate plot file. Regardless of the plotcap entry ultimately used, the same format of the plot file is used as input to WinPlot. In previous versions, 2 different formats were supported depending on which plotcap entry was going to be used (i.e. color-aware entries vs. line-style

aware entries). In addition to this change, you can now specify the plotcap entry to be used in WinPlot from the Print/Plot page of the Tools/Options property sheet:



The choice you make in this dialog will be the default when the WinPlot application is started to plot the drawing. By setting your choice for the plotter in this dialog, the software can make certain optimizations to the intermediate plot file to speed the plotting process. Of course you can still change the plotter designation from WinPlot if you change your mind and want to plot to a different plotter.

If the default font you specify in ExpertCAD is a native SofTech font, that font will be loaded from disk when a new session is started. This ensures that if you did customize a font (e.g. cadFont1), your custom font will get loaded instead of using the default SofTech provided cadFont1 font embedded in the software itself.

ExpertCAM has been revised to be more responsive to an interrupt (Esc key) when replaying sequences. Hitting the Esc key will cause the replay to be abandoned immediately.

A discrete problem with a "Stack Full" error in ExpertCAM has been corrected.

Several discrete problems with translating AutoCAD data files to ExpertCAD format have been addressed in this release.

Closed Track IDs

Track is the electronic database system that records all customer and internally generated requests for corrections and enhancements. When you report a problem or request an enhancement, our customer service representatives will input your request into the Track system and give you a Track ID number. When we complete a release, we set the status on all records in the Track database that have been addressed to closed. In the table below is a listing of all Track items addressed by this release:

ID	Synopsis
1	The cursor style is not being saved to the ExpertCAD 3D configuration file.
2	On some systems, the Microsoft redistributable dll's do not get installed if needed when installing ToolDesigner.
5	The remove duplicate entities feature in ExpertCAD 3D does not work. The application that performs this function did not get installed.
6	Some arcs are missing when printing this file from ExpertCAD 3D.
7	You cannot write an HSF file from ExpertCAD 3D unless the render application has been used at least once during the session.
9	The color and line style of surfaces are not restored after creating a fillet in ExpertCAD 3D.
10	If you top the ExpertCAD 3D window by clicking in the message area, the objects will not redraw.
12	Changing the workplane from the toolbar will cause the views to become inactive.
15	The show class operator in ExpertCAD 3D is not redrawing the objects in the current class correctly.

16	When changing the workplane from the toolbar the screen is frozen, requiring a redraw.
17	A null expression is returned when you click the Apply button on the Tolerance tab of the Tools/Options property sheet in ExpertCAD 3D.
18	The profiles in this file will not join together using the join feature in ExpertCAD 3D.
19	ExpertCAD 3D will not print dimensions in an ISO view.
23	Some surfaces are not properly trimmed after using the Lock Builder function in ExpertCAD 3D.
24	ExpertCAD 3D will not a fillet larger than .500 when using the Fillet Wizard.
28	ExpertCAD 3D will not create a fillet on surfaces that are 90 degrees to each other.
29	The text buffer AUTOBACKUP is being saved to the ExpertCAD 3D configuration file when it should not be.
30	The backup file is inadvertently being deleted when a new session of ExpertCAD 3D is started.
31	Layers names in an ExpertCAD file are not recognized by ExpertCAD 3D.
32	After breaking a profile in ExpertCAD 3D, it is displayed as unselected but it is still selected.
33	ExpertCAD 3D writes a zero length PDB file if a new name is entered into the save dialog from the keyboard
34	This 3D file will not render completely in the render application.
35	ExpertCAD 3D cannot read the supplied IGES file.
36	ExpertCAD 3D will not read the circles contained in this PDB file.
37	You cannot copy to the clipboard using the PDB format from ExpertCAD 3D.
38	ExpertCAD 3D is not saving PDB files correctly if a file name is entered from the keyboard in the save dialog.
42	The plotcap entry for LJ400a is incorrect in the file plotcap.txt.
43	If you type the file name to plot into the text box instead of using Browse, WinPlot doesn't plot the file.
44	The ExpertCAD 3D Draft Surface function is not maintaining the shape of the input curve.
46	The supplied part will not render if the display quality is set to the maximum.
47	The point edit menu in ExpertCAD 3D should prompt for incremental distances when a current line is not used.
48	The tag names are not sorted in the dialog for setting the class to a tag in ExpertCAD 3D.
49	After the operation "flatten selected" operation in ExpertCAD 3D, the flattened objects created appear unselected although they are selected.
50	Add an option to the "flatten" command (-t) to return 3D text if possible instead of profiles for ExpertCAD 3D.
51	Add a full-screen mode option to ExpertCAD 3D to automatically size a single view to the graphics area and make all viewing commands view-relative.
53	The Rotate 3D class operator leaves the copies selected after rotating them in ExpertCAD 3D. Only the last copy created should be selected.
54	Entities drawn in the 3 new colors added for version 2009 don't get output when writing Adobe PDF files.
55	Changing the output class in the Adobe PDF Options causes "Entire Design" to fail.
58	Entities drawn in the 3 new colors added for version 2009 don't print.
59	It takes an extraordinary amount of time to delete a large design when opening another design or starting a new design in ExpertCAD 3D.
60	Interactive performance (e.g. choosing an icon) degrades and uses an excessive amount of CPU with a large data set in memory in ExpertCAD 3D.
61	The mouse wheel should zoom in when you roll the wheel towards you and zoom out when you roll the wheel away from you.
62	Change the render application to use the mouse wheel the way the other AMT applications do.
63	Add Alt-<key> combinations to ExpertCAD 3D for the mouse wheel and make them do the same function as the render application.
64	Entities drawn in color 0 with a black background don't get drawn when a bitmap is created using the Export or Cut/Copy function in ExpertCAD 3D.
65	Exporting a raster file (.bmp) will fail for physically large designs in ExpertCAD 3D.
67	Extreme zoom scales in or out of a view causes problems such as very slow redraw for arcs & ellipses in ExpertCAD 3D.
68	The short key 'n' (find nearest vertex) in ExpertCAD 3D does not work properly if

	dimension(s) are nearby.
69	The short key 'n' command in ExpertCAD 3D does not work correctly. It should look in an ever-expanding hit radius to find a vertex like ExpertCAD does.
110	Add a full-screen mode option to ExpertCAD 3D to automatically size a single view to the graphics area and make all viewing commands view-relative.
133	Add a full-screen mode option to ExpertCAD 3D to automatically size a single view to the graphics area and make all viewing commands view-relative.
239	Save & Save As leave "busy" cursor posted if security key is missing
405	Add a full-screen mode option to ExpertCAD 3D to automatically size a single view to the graphics area and make all viewing commands view-relative.
409	Don't set the class to selected when using the Select Nearby icon or the selection cursor stroke.
425	When overwriting an existing PDB file from ExpertCAD 3D, the prompts for confirmation/appending are asked are in the wrong order.
494	In ExpertCAD 3D, draw the selected profiles last to prevent them from being obscured by surface data when the window needs to be redrawn.
525	In ExpertCAD 3D allow the user to copy and rename of any standard workplanes.
556	Splines written from ExpertCAD 3D to ExpertCAD contain too many points when linearized.
568	Add the ability for the user to specify an extension that will automatically be added during save operations.
666	Add support for Windows True Type fonts to ExpertCAD 3D.
762	Add support for the Ctrl and Alt keys when using the dynamic viewing features in ExpertCAD 3D.
764	The keypad will not enter numbers into a text note in ExpertCAD.
842	ExpertCAM Reference Manual cannot be located on disk for Windows edition.
943	Add the ability in ExpertCAD 3D to read and write AutoCAD files.
949	Add the ability for ExpertCAD 3D to report how many entities are hidden when reading a file.
1040	Add TrueType font support to ExpertCAD 3D.
1084	The dynamic rotation in ExpertCAD 3D is not very smooth.
1131	The dynamic rotation in ExpertCAD 3D is not very smooth.
1156	Changing units in ExpertCAD 3D causes unwanted redraws and shifting of views.
1306	After reading this ExpertCAD file into ExpertCAD 3D, you cannot change the units to millimeters.
1325	Write to ExpertCAD will produce a zero length file if the cursor is not in a view.
1485	Setting the text height to one inch in ExpertCAD 3D does not produce text that measures one inch in height.
1486	Update the relevant user information in the File/Properties dialog automatically when a file is saved.
1365	Revise plotting to use a uniform format for the neutral plot file regardless of the plotcap entry that will ultimately be used to plot a drawing.
1544	Add an option to plotting for both 2D and 3D that will produce a monochrome plot regardless of the plotcap entry that is used to plot the drawing.
1549	Add the ability for the user to specify an extension that will automatically be added during save operations.
1738	The create line tangent to two arcs function in ExpertCAD 3D fails for this discrete case.
1789	Omit construction lines from the output when using the File/Create Mold Drawing feature in ExpertCAD 3D.
1810	In addition to fitting to the paper, allow for a precise scale (full size, half size, ...) to be set when generating a PDF file from 2D or 3D.
1885	Exporting profiles in PDB format from ExpertCAD 3D needs to produce a continuous curve where possible instead of separate geometric entities.
1917	Add support for True Type fonts to ExpertCAD.
1927	Electrode notes are not being output when a PDF file is created from ExpertCAD 3D.
1943	Dimensions are properly updated when switching back and forth between inch and metric in ExpertCAD.
1981	An incorrect error message is output when the function "make equally spaced pointline" fails in ExpertCAD 3D.

2126	The dynamic rotation in ExpertCAD 3D is not very smooth.
2174	The fit function in ExpertCAD 3D for an isometric view does not work well when text notes are present in the design.
2279	The class operators "set section number" and "set crs number" are no longer needed in ExpertCAD 3D and should be removed from interface.
2435	Revise plotting to use a uniform format for the neutral plot file regardless of the plotcap entry that will ultimately be used to plot a drawing.
2513	Add support for True Type fonts to ExpertCAD.
2606	Add "Zoom To Selection" as an option for the View menu for 2D and 3D to zoom into the area of the currently selected entities.
2666	Add "Read-Only" to the title bar next to the file name when opening a file that has read-only permissions.
2676	The grid in ExpertICON gets scrambled if the window is moved.
2690	The ScriptLink text buffer LAST_COMMAND doesn't get set after a cursor stroke.
2695	Add ability to read & write AutoCAD files in ExpertCAD 3D.
2720	When you plot this drawing from ExpertCAD the circles do not plot completely.
2762	In ExpertCAM the Esc key does not interrupt the replay of a machining sequence.
2778	Add a ScriptLink command ".echo" similar to "echo" that will process Windows file name character strings (e.g. c:\B\X.ddd) as literal characters.
2786	The micro symbol is not being translated correctly from AutoCAD to ExpertCAD.
2792	The graphic debugging functions for the parametrics module in ExpertCAD sometimes don't draw correctly.
2804	The type-in text at the cursor location icon in ExpertCAD and entering digits from the number pad on the keyboard does not work for certain numbers.
2808	Add Shift and Ctrl key modifiers for the mouse wheel to pan left/right, up/down in both 2D and 3D.
2812	This AutoCAD DXF file will not translate.
2813	Some attributes (text notes) in this DXF file are translated as hidden however they are visible in AutoCAD.
2818	The type-in text at the cursor location icon in ExpertCAD and entering digits from the number pad on the keyboard does not work for certain numbers.
2820	Add the ability to retrieve the holder description in the ExpertCAM lathe module.
2821	The horizontal lines for the top and bottom of the shaft are missing when this AutoCAD DXF file is translated to ExpertCAD.
2822	Warning message from AutoCAD to ExpertCAD translator for invalid entities doesn't print the entity name.
2823	The character cloning function for ExpertFONT is not honoring a character entered as a hex number.
2824	The text buffer CACHE_DIR is not being saved to the setup file ExpertCAD-Setup.cfg.
2828	The "big" and "small" ScriptLink commands should do nothing if the application is running in the background mode.
2829	Don't save the default font with the savestate of ExpertCAD or ExpertCAD 3D. The fonts should be loaded at run-time in case they were customized.
2831	Dimensions do not update when the "Scale arrows ..." switch in the Options/Dimens.. property sheet is changed in ExpertCAD.
2832	The Zoom In/Out entry on the View pull-down menu does not dynamically zoom in and out in ExpertCAD.
2833	The origin (0.000) for a vertical ordinate dimension in ExpertCAD should never include a tolerance.
2834	This AutoCAD DWG file will not translate.
2835	There are circles in this AutoCAD DWG file that are not being converted to circles.
2836	A -V in a filename will cause ExpertCAD to check for the wrong software license.
2839	The partial line erase feature in ExpertCAD in the Drawing Xtras menu will cause ExpertCAD to fail in this example.
2840	Ignore the setting of the text buffer FONT_PATH if it was saved inside a 2D or 3D file. Always use the path specified in Tools/Options.
2843	Use the text buffer DRAWN_BY to set the Author field for PDF files instead of LOGIN.
2844	Output for the date primitive is incorrect when using numeric values to choose a different format.

2846	An incorrect version of the macro file "view" is shipped with ExpertCAD.
2847	The error message for the primitive defmenu is incorrect.
2850	Automatically switch to butt endcaps when drawing dashed lines for PDF output so the dashing is more clearly evident in the output.
2852	In Expert!CON the Paste feature does not work.
2853	In ExpertCAM you get the error "Stack Full" when replaying this machining sequence.
2854	When plotting an ExpertCAD file from either ExpertCAD or ExpertCAD 3D directly from WinPlot, the colors may not be same as what is on the screen.
2855	ExpertCAM will generate a "Stack Full" error when replaying the sequences in this file.
2856	The primitive make-boundary in ExpertCAD is returning incorrect results using this file.
2858	The getkey primitive can't be interrupted by hitting the Esc key.
2859	If the getkey ScriptLink primitive terminates prematurely, the cursor isn't restored.
2860	If you invert the screen to white and start a new session of ExpertVIEW the icon colors are incorrect.
2861	If you draw in color 0 then do a Copy or Cut, the raster on the clipboard uses the incorrect color.
2862	Exporting a raster file (.bmp) will fail for physically large designs in ExpertCAD 3D.
2864	Customer supplied DWG files will cause the translator to abort abnormally.
2452	Add the capability for ExpertCAM to import AutoCAD DXF and DWG data.
2578	Allow the user to specify a file extension to be used for all newly created data files.
2599	AutoCAD dwg format file will not translate.